

CITY of RIO DELL SANITARY SEWER MANAGEMENT PLAN

Prepared for:
City of Rio Dell
475 Hilltop Drive
Rio Dell, California 95562

December 28, 2010

Prepared by:
Orrin Plocher and Stan Thiesen

of



Freshwater Environmental Services

78 Sunny Brae Center
Arcata, California 95519
Phone (707) 839-0091

TABLE OF CONTENTS

LIST OF APPENDICES	iv
INTRODUCTION	1
ELEMENT 1: GOALS	2
1.1 Regulatory Requirements for the Goals Element	2
1.2 SSMP Goals	2
ELEMENT 2: ORGANIZATION	3
2.1 Regulatory Requirements for the Organization Element.....	3
2.2 Organization	3
2.3 Authorized Representative	4
2.4 SSO Reporting Chain of Communication	4
ELEMENT 3: LEGAL AUTHORITY	6
3.1 Regulatory Requirements for the Legal Authority Element.....	6
3.2 City of Rio Dell Legal Authority	6
3.3 Agreements with Other Agencies	8
ELEMENT 4: OPERATION AND MAINTENANCE PROGRAM	9
4.1 Regulatory Requirements for the Operations and Maintenance Program Element	9
4.2 Maps.....	9
4.3 Preventive Operations and Maintenance Program	9
4.4 Rehabilitation and Replacement Program	11
4.5 Training.....	12
4.6 Contingency Equipment and Replacement Parts Inventory.....	12
ELEMENT 5: DESIGN AND PERFORMANCE PROVISIONS	14
5.1 Regulatory Requirements for the Design and Performance Provisions....	14
5.2 Standards for Installation, Rehabilitation and Repair	14

5.3 Standards for Inspection and Testing of New, Rehabilitated, and Repaired Facilities.....	14
ELEMENT 6: OVERFLOW EMERGENCY RESPONSE PLAN.....	16
6.1 Regulatory Requirements for the Overflow Emergency Response Plan...	16
6.2 Goals	16
6.3 SSO Notification Procedure.....	16
6.4 SSO Response Procedures.....	17
6.5 Priorities.....	17
6.6 Safety During Response	18
6.7 Initial Response	18
6.8 Initial Spill Containment Measures.....	19
6.9 Recovery and Cleanup	19
6.10 Public Notification	20
6.11 Water Quality Sampling and Testing	21
6.12 SSO Investigation and Documentation	21
6.13 SSO Reporting	22
6.14 Equipment	24
6.15 Training.....	24
ELEMENT 7: FATS, OILS AND GREASE (FOG) CONTROL PROGRAM	26
7.1 Regulatory Requirements for the FOG Program	26
7.2 Public Education and Outreach Program.....	26
7.3 FOG Source Control	26
7.4 Disposal of FOG	27
7.5 Legal Authority for FOG Program	27
7.6 Requirements to Install Grease Removal Devices	28

7.7 Authority to Inspect Grease Producing Facilities	28
7.8 Identification of Grease Problem Areas and Sewer Cleaning	28
ELEMENT 8: SYSTEM EVALUATION AND CAPACITY ASSURANCE PLAN	29
8.1 Regulatory Requirements for the System Evaluation and Capacity Assurance Plan	29
8.2 Capacity Evaluation	29
8.3 Recommended Capacity Projects	29
8.4 Schedule.....	29
ELEMENT 9: MONITORING, MEASUREMENTS, AND PROGRAM MODIFICATIONS	30
9.1 Regulatory Requirements for the Monitoring, Measurements, and Program Modifications.....	30
9.2 Monitoring Information	30
9.3 Performance Measures	30
9.4 Performance Monitoring and Program Changes	31
ELEMENT 10: SSMP PROGRAM AUDITS	32
10.1 Regulatory Requirements for the SSMP Program Audits	32
10.2 SSMP Audits Discussion	32
ELEMENT 11: COMMUNICATION PLAN	33
11.1 Regulatory Requirements for the Communication Plan.....	33
11.2 Communication Plan.....	33

LIST OF APPENDICES

APPENDIX A	ORDER NO. 2006-0003
APPENDIX B	ORDER NUMBER WQ 2008-002-EXEC
APPENDIX C	RIO DELL MUNICIPAL ORDINANCE 190
	RIO DELL MUNICIPAL CODE CHAPTER 13.10
	RIO DELL MUNICIPAL CODE CHAPTER 15.05

INTRODUCTION

This Sewer System Management Plan (SSMP) has been prepared in compliance with requirements of the State Water Resource Control Board (SWRCB) pursuant to Order No. 2006-0003, Statewide General Waste Discharge Requirements for Sanitary Sewer Systems (WDR) included in Appendix A, and Order Number WQ 2008-002-EXEC included in Appendix B. The WDR requires development and implementation of a written SSMP, and defines eleven mandatory SSMP elements. The WDR also defines associated monitoring, record keeping, reporting, and public notification requirements.

The City of Rio Dell's SSMP has been prepared with the assistance of Freshwater Environment Services (FES), as described in the agreement between the City of Rio Dell and FES dated September 24, 2010. This initial SSMP will become a living document, and should be updated as needed to reflect changes to the SSMP elements. The intent of this SSMP is to meet the requirements of the Statewide WDR.

This document presents eleven elements in the order presented in the WDR:

1. Goals;
2. Organization;
3. Legal Authority;
4. Operation and Maintenance Program;
5. Design and Performance Provisions;
6. Overflow Emergency Response Plan;
7. Fats, Oils, and Grease (FOG) Control Program;
8. System Evaluation and Capacity Assurance Plan;
9. Monitoring, Measurement, and Program Modifications;
10. SSMP Program Audits; and
11. Communication Plan.

As described in the NPDES permit, the City of Rio Dell owns, operates, and maintains a municipal wastewater treatment plant and associated collection system and disposal facilities. The Facility serves approximately 1,126 residential, commercial, and institutional users in the City of Rio Dell. The City of Rio Dell waste treatment works provides collection, sedimentation, biological treatment, disinfection and dechlorination of wastewater. Design capacity is 0.9 mgd (million gallons per day). Waste water flows from the City of Rio Dell range between 0.2 million gallons per day during dry weather and 1.3 million gallons per day during winter storms. Wastewater receives primary clarification and secondary treatment with rotating biological contactors. During the winter months, secondary clarifier overflow is disinfected and dechlorinated prior to discharge to the Eel River at 40° 29' 45" North, 124° 5' 30" West. Wastewater is discharged to a percolation pond on a shallow gravel bar during summer months. Biosolids are land-applied. Best Management Practices are employed by the City, the hauler and the landowner to prevent a condition of pollution or nuisance. The City of Rio Dell wastewater treatment facility will be undergoing significant modification and upgrades scheduled to take place in the spring of 2011.

ELEMENT 1: GOALS

The intent of this section is to identify the goals that the City has established for its SSMP. These goals are intended to provide focus for City staff to continue proactive management of its wastewater collection system.

1.1 Regulatory Requirements for the Goals Element

The WDR requires that the SSMP goals focus on proper management, operation, and maintenance of all parts of the sanitary sewer system. This will help reduce and prevent Sanitary Sewer Overflows (SSOs), as well as mitigate any SSOs that do occur.

1.2 SSMP Goals

The goals of the City of Rio Dell's SSMP include:

- Maintaining or improving the condition of the collection system infrastructure in order to provide reliable services now and into the future;
- Cost-effectively minimizing infiltration/inflow (I/I) and provide adequate sewer capacity to accommodate design storm flows;
- Minimizing the number and impact of sanitary SSOs that occur;
- Preventing unnecessary damage to public and private property;
- Working cooperatively with local, state, and federal agencies to investigate the causes of, minimize, and mitigate the impacts of SSOs;
- Meeting all applicable regulatory notification and reporting requirements;
- Being available and responsive to the needs of the public to prevent and restore interruptions in service, and to minimize public health and property impacts related to SSOs;
- Implementing regular, proactive maintenance of the system to remove and control roots, debris, and fats, oils and grease (FOG) that may cause SSOs;
- Prioritizing renewal and replacement of wastewater collection system facilities to maximize their useful life and optimize capital expenditures; and
- Maintaining the SSMP, which will serve as a reference for the City's sanitary sewer system management practices.

ELEMENT 2: ORGANIZATION

The intent of this section of the SSMP is to identify the City staff members responsible for implementing this SSMP, responding to SSO events, and meeting the SSO reporting requirements. This section also includes the designation of the Legally Responsible Official (LRO) or authorized representative to meet SWRCB requirements for completing and certifying spill reports.

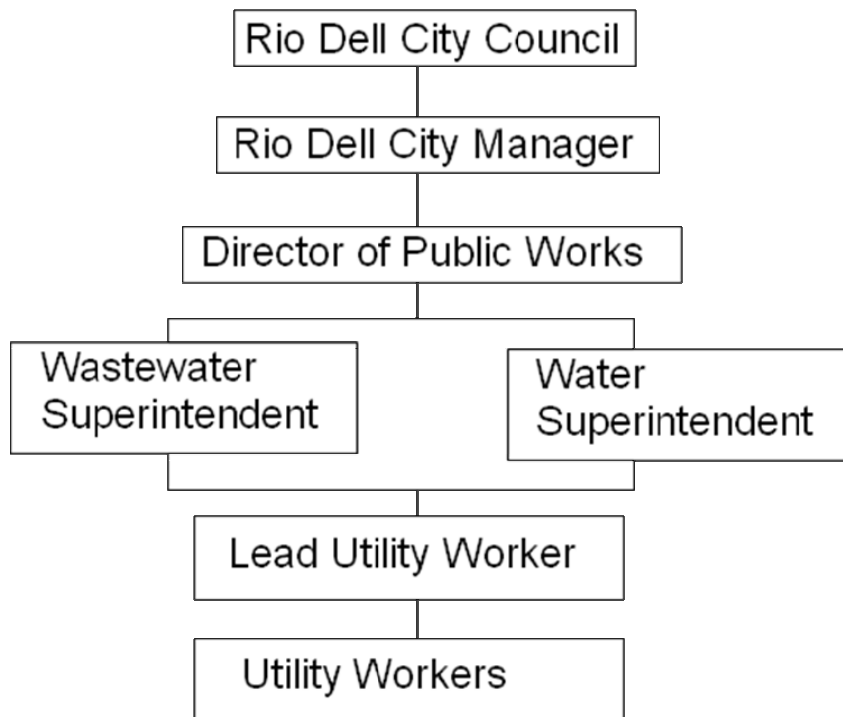
2.1 Regulatory Requirements for the Organization Element

The WDR requires that the Organization element of the SSMP provide the following:

- The name of the responsible or authorized representative;
- The names and telephone numbers for management, administrative, and maintenance positions responsible for implementing specific measures in the SSMP program. Include lines of authority as shown in an organization chart or similar document with a narrative explanation; and
- The chain of communication for reporting SSOs, from receipt of a complaint or other information, including the person responsible for reporting SSOs to the State and Regional Water Boards and other agencies if applicable.

2.2 Organization

The portion of the City's organization chart related to management, operation, and the maintenance of the wastewater collection system is shown in below:



A description of the roles for wastewater collection system agency staff is described below:

City Council – Establishes policy.

City Manager – Enforces policy, plans strategy, leads staff, allocates resources, delegates responsibility and authorizes outside contractors to perform services.

City Director of Public Works - Responsible for directing, developing, implementing, evaluating, and administering the operations and staff required to design, construct, operate, and maintain the City’s water, and sewer infrastructure.

Wastewater Superintendent – Manages field operations and maintenance activities, provides relevant information to the Director of Public Works, prepares and implements contingency plans, leads emergency response, investigates and reports SSOs, and trains field crews.

Lead Utility Worker – Staff that conduct preventive and corrective maintenance activities, mobilize and respond to notification of stoppages and SSOs.

Position	Name	Phone Number
City Manager	Ron Henrickson	707-764-3532
Director of Public Works	Randy Jensen	707-764-3541
Wastewater Superintendent	Rick Chicora	707-764-5754
Lead Utility Worker	Justin Barrington	707-764-5754
Utility Worker	Jesse Smith	707-764-5754
Utility Worker	Cameron Yaple	707-764-5754

2.3 Authorized Representative

The Wastewater Superintendent, Rick Chicora, is the Legally Responsible Official (LRO) or duly authorized representative to prepare, certify and submit electronic spill reports to the RWQCB and SWRCB and to notify other government agencies.

2.4 SSO Reporting Chain of Communication

Sanitary system overflow (SSO) detection, notification, response and reporting processes will be described in Element 6 – Overflow Emergency Response Plan. The sanitary system overflow (SSO) detection, notification, and response process is discussed below.

During normal business hours calls regarding SSOs are received by City Hall. City Hall personnel will contact the Wastewater Superintendent who will dispatch responders. In cases when the Wastewater Superintendent is not available, the Lead Utility Worker will be contacted who will dispatch responders.

After normal working hours calls regarding SSOs are received by the Rio Dell Police Department (RDPD). The RDPD will contact on-call utility staff using a pager that is assigned to staff on a weekly basis. The on-call utility staff will be the initial responder to SSOs. If the situation warrants, additional utility workers will be contacted to respond. In complex SSOs the Wastewater Superintendent and or the Director of Public Works will be contacted for additional support and guidance. Information from the SSO and SSO response will be provided by the responders to the Wastewater Superintendent who will make the necessary regulatory reports.

The regulatory notification responsibility and requirements are included in the *Sanitary Sewer Overflow and Backup Response Plan*.

ELEMENT 3: LEGAL AUTHORITY

This element of the SSMP discusses the City of Rio Dell's Legal Authority, including its Municipal Code and agreements with other agencies. This section fulfills the Legal Authority requirement for the WDR (Element 3).

3.1 Regulatory Requirements for the Legal Authority Element

The requirements for the Legal Authority element of the SSMP are summarized below. The City must demonstrate, through collection system use ordinances, service agreements, or other legally binding procedures, that it possesses the necessary legal authority to:

1. Prevent illicit discharges into its wastewater collection system (examples may include infiltration and inflow (I/I), storm water, chemical dumping, unauthorized debris and cut roots, etc.);
2. Require that sewers and connections be properly designed and constructed;
3. Ensure access for maintenance, inspection, or repairs for portions of the lateral owned or maintained by the Public Agency;
4. Limit the discharge of fats, oils, and grease and other debris that may cause blockages; and
5. Enforce any violation of its sewer ordinances.

3.2 City of Rio Dell Legal Authority

The legal authority required for the SSMP is contained within Rio Dell's Municipal Ordinance Number 190, Rio Dell Municipal Code Chapter 13.10 and 15.05.

Rio Dell Municipal Ordinance

Rio Dell Municipal Ordinance Number 190 is dedicated to the sewer system and is included in Appendix C. The sections that fulfill the requirements of the SSMP are indicated below:

1. Prevent illicit discharges into its wastewater collection system (examples may include infiltration and inflow (I/I), storm water, chemical dumping, unauthorized debris and cut roots, etc.);

Article II, Section 4, Connections, Installation of Services ETC. (Pretreatment required for non-domestic waste).

Article II, Section 22, Building Sewers, Laterals, and Connections. (Prohibits down spouts and roof drains into the sewer system and prohibits infiltration).

2. Require that sewers and connections be properly designed and constructed;
Article II, Section 22, Building Sewers, Laterals, and Connections. (Design and construction standards, cleanouts required, testing required).

3. Ensure access for maintenance, inspection, or repairs for portions of the lateral owned or maintained by the Public Agency;

Article II, Section 9, Right of Entry of City Employees for Purpose of Making Inspection.

4. Limit the discharge of fats, oils, and grease and other debris that may cause blockages;

Article II, Section 4, Connections, Installation of Services ETC. (Pretreatment required for non-domestic waste).

5. Enforce any violation of its sewer policies;

Article II, Section 8, Shutting off Water

Article II, Section 33, Nuisance Abatement

Article II, Section 35, Abatement of Contamination

Article II, Section 36, Issuance of Preemptory Abatement Order; Report to Regional Board; Prosecution of Injunction Proceedings.

Article II, Section 37, Discharge of Sewage or Other Waste Resulting in Contamination a Misdemeanor

Article II, Section 40, Abatement Procedures.

Rio Dell Municipal Code

Rio Dell Municipal Code Chapter 13.10 is dedicated to the sewer system and is included in Appendix C. Rio Dell Municipal Code Chapter (RDMC) 15.05 is dedicated to Building and Construction, Construction Codes and is included in Appendix C. The sections that fulfill the requirements of the SSMP are indicated below:

1. Prevent illicit discharges into its wastewater collection system (examples may include infiltration and inflow (I/I), storm water, chemical dumping, unauthorized debris and cut roots, etc.);

RDMC, Article II, Connections, Installation of Service 13.10.040. (Pretreatment and screening).

RDMC, Article II, Connections, Installation of Service 13.10.220. (Building sewers, laterals and connections), (6) Down Spouts/Roof Drain.

RDMC, Article II, Connections, Installation of Service 13.10.220. (Building sewers, laterals and connections), (9) Maintenance of Building Sewer.

RDMC, Article IV, Services 13.10.340. (Sewage not to be discharged so as to result in contamination, pollution or nuisance).

RDMC, Article IV, Services 13.10.400. (Prohibited discharges of uncontaminated waters).

RDMC, Article IV, Services 13.10.410. (Prohibited discharges of enumerated wastes.).

RDMC, Article IV, Services 13.10.420. (Discharges – Criteria)

2. Require that sewers and connections be properly designed and constructed;

RDMC, Article II, Connections, Installation of Service 13.10.220. (Building sewers, laterals and connections), (1) Permit Required.

RDMC, Article II, Connections, Installation of Service 13.10.220. (Building sewers, laterals and connections), (2) Design and Construction Requirements.

RDMC, Article II, Connections, Installation of Service 13.10.220. (Building sewers, laterals and connections), (5) Cleanouts.

RDMC, Article II, Connections, Installation of Service 13.10.220. (Building sewers, laterals and connections), (11) Plans, Profiles and Specifications

Required.

RDMC, Article II, Connections, Installation of Service 13.10.220. (Building sewers, laterals and connections), (16) Design and Construction Standards.

Construction Codes 15.05.020. (Building codes).

3. Ensure access for maintenance, inspection, or repairs for portions of the lateral owned or maintained by the Public Agency;

RDMC, Article II, Connections, Installation of Service 13.10.090. (Right of entry of City employees for the purpose of making inspections),

4. Limit the discharge of fats, oils, and grease and other debris that may cause blockages;

RDMC, Article II, Connections, Installation of Service 13.10.040. (Pretreatment and screening).

RDMC, Article IV, Services 13.10.430. (Interceptors – Required).

RDMC, Article IV, Services 13.10.440. (Interceptors – Maintenance).

RDMC, Article IV, Services 13.10.450. (Inspections and sampling).

5. Enforce any violation of its sewer policies

RDMC, Article IV, Services 13.10.330. (Nuisance abatement).

RDMC, Article IV, Services 13.10.350. (Abatement of contamination).

RDMC, Article IV, Services 13.10.360. (Issuance of peremptory abatement order – Report to regional board – Prosecution of injunction proceedings).

RDMC, Article IV, Services 13.10.370. (Discharge of sewage or other waste resulting in contamination a misdemeanor).

RDMC, Article IV, Services 13.10.380. (Abatement procedures).

RDMC, Article IV, Services 13.10.460. (Issuance of cease and desist orders).

RDMC, Article IV, Services 13.10.470. (Submission of time schedules).

RDMC, Article IV, Services 13.10.480. (Termination of service).

RDMC, Article IV, Services 13.10.490. (Immediate suspension of service).

RDMC, Article IV, Services 13.10.510. (Violation is a misdemeanor).

The chapters listed above pertain to the legal authority required for fulfillment of SSMP requirements. The City of Rio Dell will be updating their wastewater use municipal code with a completion goal of December 2011.

3.3 Agreements with Other Agencies

The City of Rio Dell does not have any satellite collection systems or agreements with other agencies. The City of Rio Dell has the goal of establishing formal mutual aid agreements with neighboring communities by 2012.

ELEMENT 4: OPERATION AND MAINTENANCE PROGRAM

4.1 Regulatory Requirements for the Operations and Maintenance Program Element

The WDR states that the City shall develop and implement an Operations and Maintenance (O & M) Program which should include the following:

- The City must maintain an up-to-date map of the sanitary sewer system, showing all gravity line segments, manholes, pumping facilities, pressure pipes, valves, and applicable storm water conveyance facilities;
- The City must describe routine preventive operation and maintenance activities by staff and contractors; including a system for scheduling regular maintenance and cleaning of the sanitary sewer system with more frequent cleaning and maintenance targeted at known problem areas. The Preventive Maintenance program should have a system to document scheduled and conducted activities, such as work orders;
- The City must develop a rehabilitation and replacement plan to identify and prioritize system deficiencies and implement short-term and long-term rehabilitation actions to address each deficiency. The program should include regular visual and TV inspections of manholes and sewer pipes, and a system for ranking the condition of sewer pipes and scheduling rehabilitation. Rehabilitation and replacement should focus on sewer pipes that are at risk of collapse or prone to more frequent blockages due to pipe defects. Finally, the rehabilitation and replacement plan should include a capital improvement plan that addresses proper management and protection of the infrastructure assets. The plan shall include a time schedule for implementing the short-term and long-term plans plus a schedule for developing the funds needed for the capital improvement plan;
- The City must provide equipment and replacement part inventories, including identification of critical replacement parts; and
- The City must provide training on a regular basis for staff in sanitary sewer system operations, maintenance, and require contractors to be appropriately trained.

4.2 Maps

The City of Rio Dell maintains a set of sanitary sewer maps utilizing Geographic Information System (GIS) software. The sanitary sewer and stormwater maps are updated with new and rehabilitated facilities by City of Rio Dell Public Works staff on an as-needed basis. Electronic copies of the maps are maintained and accessible at the wastewater office. The City of Rio Dell is in the process of using GIS software to generate a wastewater/stormwater atlas printed at a useable scale and indexed to a map Key. Hard copies of the atlas will be kept in the wastewater office and in field vehicles. The wastewater/stormwater atlas will be used to locate and identify wastewater and storm drainage structures and to aid in the response to a SSO. The City of Rio Dell has a goal for completion of the atlas by December 2011.

4.3 Preventive Operations and Maintenance Program

The wastewater treatment plant (WWTP) performs a variety of scheduled, preventive, predictive, and breakdown maintenance on a diverse spectrum of equipment. The main goal

of maintenance activities is to ensure equipment availability to meet plant process operation requirements.

The City prioritizes its preventive maintenance activities. The preventive maintenance program includes compiling and maintaining a list of areas within the system that require repeated maintenance, "hot spots". The Hot Spot list for the City of Rio Dell includes a single location at Eeloa Ave and North Pacific Avenue. The preventive maintenance program includes scheduled jet-rodding of the hot spot, regular inspection of lift stations, and investigation of customer complaints. The City of Rio Dell maintains a log book in the wastewater office documenting hot spot maintenance. The log book includes location information, observations, direction and distance of cleaning, and comments.

Gravity Sewers

The City currently uses in-house services for routine and emergency sewer cleaning as needed. The City has a goal of cleaning their entire sewer system by 2014. The City uses its field crews to complete most emergency repairs. The City contracts with Wendt Construction and other local contractors to correct larger emergency problems.

The City of Rio Dell maintains a list of hot spots. Preventive maintenance on the hot spots are performed and documented every 30 days. A log book is maintained in the treatment plant office that documents the dates, locations and comments from cleaning activities. The City maintains tables indicating the manhole that was entered, direction of rodding and total feet of sewer cleaned. The City of Rio Dell has an ongoing sewer cleaning program that results in systematic system-wide cleaning being accomplished on a 1 to 2 year cycle.

Lift Stations and Force Mains

The City's force mains O & M program consists of periodic inspections and corrective maintenance activities conducted by City staff. Flow inspections are made periodically from the manholes located at the intersection of the force main and the gravity sewer line. The location of the manholes permits access for upstream cleaning of the force mains.

The City's maintenance staff is responsible for the City's two lift stations each equipped with two pumps. The City performs daily inspections of the lift stations and backup generators for the lift stations. Daily inspections include visual check of the equipment, manual cycling of pumps, checking and cleaning floats, recording hour meter readings, the removal of debris, and checking the backup generator. Extensive maintenance includes cleaning sumps, and removing pumps for inspection and repairs if necessary. Pumps are serviced annually by a contractor. Lift station inspections and maintenance are tracked in log books that are kept at the lift station. Backup generators for the lift stations are tested weekly. The lift stations are monitored by the Supervisory Control and Data Acquisition (SCADA) system 24 hours a day. The SCADA system is programmed to autodial by telephone to Wastewater Superintendent and then the Water Superintendent in the case of an alarm condition.

Root Control

The City has very few problems with roots throughout the system. If closed circuit television (CCTV) determines roots are an issue in a line, root cutting will be performed with mechanical cutters.

Odor Control

The City receives very few odor complaints per year. The City has no official odor control program in place. When there are complaints, City crews apply deodorant around the lift stations.

Non-Routine Maintenance

The City utilizes in-house services for cleaning of known trouble spots. Non-routine maintenance activities include investigation and response to any complaints regarding a manhole overflow, missing or shifted manhole covers, manhole covers that are excessively noisy, residential plumbing problems, lift station malfunction, unexpected sewer odor, etc. Sewer complaints are investigated and appropriate actions are taken to resolve the source of the problem.

Special Needs Maintenance

The City has a hot spot sewer cleaning program for identified problematic line segments to prevent blockages and SSOs with a two month cleaning cycle. Frequencies of cleaning cycles may be adjusted based on the observations during the sewer cleaning. The frequency will be shortened for line segments with moderate to heavy accumulations and extended for line segments with lesser accumulations.

Emergency Maintenance

The City's collection system facilities have periodically experienced blockages and/or SSOs that require unplanned maintenance under emergency conditions. The City has developed emergency maintenance procedures contained within their *Sanitary Sewer Overflow and Backup Response Plan*, for more information. Refer to Element 6.

Information Systems/Data Collection

The City currently tracks maintenance activities using paper work orders. The City has the goal of developing and implementing an electronic work order tracking system. The City of Rio Dell is utilizing the SEMS software suite for managing equipment assets and compliance scheduling. The system is used for scheduling and maintaining information regarding repeat maintenance activities, sampling and to schedule compliance activities including reports and inspections of the collection system.

4.4 Rehabilitation and Replacement Program

The City utilizes a combination of inspection activities to assess the condition of sewer assets including:

- Routine (daily) aboveground inspections of the collection system facilities, and lift stations to identify defects, damage or other identified problems;
- Select trouble spots within the system have been inspected with closed circuit television (CCTV). A system-wide CCTV inspection is scheduled to be completed by 2013. Inspection data collected during the CCTV inspections is reviewed by the Public Works Director to determine whether repairs or rehabilitation/replacement are warranted;
- Manhole inspections using CCTV are scheduled to be completed by 2013;
- A flow monitoring capacity analysis is currently being performed; and
- Smoke testing and dye testing is used to monitor and reduce I/I.

The City currently does have identified rehabilitation and replacement projects. As inspection data is collected, the City will develop a prioritized deficiency list and rehabilitation will be completed in a priority order. The City plans to use a combination of in-house and contract services to complete non-emergency rehabilitation and replacement projects. Emergency repairs will continue to be completed by the City and contractor as needed.

4.5 Training

The WWTP has developed a comprehensive Operator Training Program that expands the abilities of the operational staff, resulting in better service to the public. WWTP operating staff attends the trainings. The Public Works Administrator tracks and documents all in-house training in a binder. The City of Rio Dell offers numerous in-house training programs, including weekly safety and equipment meetings, and participates in the California Water Environmental Association (CWEA) certification program which requires ongoing continuing education to maintain certifications. Rio Dell staff attend training seminars provided by the City of Fortuna. Employees with certifications track and schedule their own required continuing education credits and recertification dates.

The trainings include:

- AED & CPR
- First Aid
- Chlorine Safety
- Forklift Safety
- Sludge Dewatering Systems
- Confined Space Entry
- Trenching Training
- Back Safety
- Flagging Training

The Public Works administrator tracks all in-house trainings in a training binder. The status of operator certification at the treatment plant for 2010 include one Grade III, one Grade II, and one operators in training (O.I.T.).

The City of Rio Dell currently requires contractors to have the following training:

- Confined Space

4.6 Contingency Equipment and Replacement Parts Inventory

The City has an equipment inventory list for the Public Works Wastewater Division. The City currently has equipment on hand to bypass sewer failures and lift station failures, such as portable pumps, and quick connections for hoses. The equipment inventory is included below:

Inventory No.	Serial No.	Item Description	Purchase Price	Purchase Date
#01	Vin#	2008 Ford F-250		2008
#02	Vin#1J8GL58K04W140859	2004 Jeep Liberty	\$30,000.00	2004

#04	Vin#1FDXF46P64ED37124	2004 Ford F-450 Dump truck	\$36,000.00	2004
#03	Vin#1FDSF34L83ED86201	2003 Ford F-350 Service Truck	\$27,500.00	2003
#05	Vin#1GECK14KXSZ209150	1995 Chevy 4x4 Truck	\$7,500.00	2003
#26	Vin#TCE678V570470	GMC 6500 Vactor Truck		2010
PW00007	Vin#1Z9EBJIE64L119011	2004 O'Brian Sewer Machine	\$36,000.00	2004
PW00006	LV2520H308722	2008 John Deere Tractor	\$16,000.00	2008
PW00008	8617	Titan Sewer Trash Pump TTP-300	\$500.00	2008
PW00050	L303-1533	MultiVision Gas Detector & Accessories	\$2316.11	2009
PW00009		Scooter Waste Water Camera		2004
PW00010		TV /VCR Combo unit for W.W. Camera		
PW00019		Blower Line		

The City of Rio Dell has a goal of developing mutual assistance program with the neighboring communities by 2012. These agreements will be to facilitate access to equipment and repair parts as necessary.

ELEMENT 5: DESIGN AND PERFORMANCE PROVISIONS

The intent of this section of the SSMP is to document the City's design and performance provisions.

5.1 Regulatory Requirements for the Design and Performance Provisions

The WDR requires that the Design and Performance element of the SSMP provide the following:

- The City must have design and construction standards and specifications for the installation of new sewer systems, lift stations and other appurtenances; and for the rehabilitation and repair of existing sewer systems; and
- The City must have procedures and standards for inspecting and testing the installation of new sewers, pumps, and other appurtenances and for rehabilitation and repair projects.

5.2 Standards for Installation, Rehabilitation and Repair

City of Rio Dell Ordinance 190, Article II, Section 22, **Design and Construction Requirements**, requires new and rehabilitated sewers and laterals, to be designed and constructed in accordance with the requirements of the City and the approval of the City Engineer. Additionally Section 22 requires cleanouts to be provided in accordance with the rules, regulations and ordinances and shall be watertight.

City of Rio Dell Municipal Code Chapter 15.05 **Construction Codes, 15.05.020 Building Codes**, the following building standards are incorporated by reference:

- California Building Standards Administrative Code;
- California Building Code;
- California Electrical Code;
- California Mechanical Code;
- California Plumbing Code;
- California Energy Code;
- California Elevator Safety Construction Code;
- California Historical Building Code;
- California Fire Code; and
- California Green Building Standards Code (CalGreen Code).

The City of Rio Dell is in the process of updating the standards for installation rehabilitation and repair of sewer facilities with a completion goal of December, 2013.

5.3 Standards for Inspection and Testing of New, Rehabilitated, and Repaired Facilities

City of Rio Dell Ordinance 190, Article II, Section 22, **Completion of Sewer Required**, requires testing of new sewer lines to be completed to the satisfaction of the City Engineer.

City of Rio Dell Municipal Code 13.10.220 Building sewers, laterals and connections, (17) Completion of Sewer Required. "Before any acceptance of any sewer line by the City and prior to the admission of any sewage into the system, the sewer line shall be tested and shall be complete to the satisfaction of the City Engineer. [Ord. 190 § 22, 1987.]"

The City of Rio Dell is in the process of updating their standards for installation, inspections and testing of new, rehabilitated and repaired sewer facilities with a completion goal of December 2013.

ELEMENT 6: OVERFLOW EMERGENCY RESPONSE PLAN

The intent of this section of the SSMP is to document the City's Overflow Emergency Response Plan (OERP).

6.1 Regulatory Requirements for the Overflow Emergency Response Plan

The City shall develop and implement an Overflow Emergency Response Plan that identifies measures to protect public health and the environment. At a minimum, this plan must include the following:

- Proper notification procedures so that the primary responders and regulatory agencies are informed of all SSOs in a timely manner;
- A program to ensure appropriate response to all overflows;
- Procedures to ensure prompt notification to appropriate regulatory agencies and other potentially affected entities (e.g. health agencies, regional water boards, water suppliers, etc.) of all SSOs that potentially affect public health or reach the waters of the State in accordance with the Adopted Amended Monitoring and Reporting Requirements State Water Resources Control Board Order Number WQ 2008-0002-EXEC. All SSOs shall be reported in accordance with this Order, the California Water Code, other State Law, and other applicable Regional Water Board WDR or National Pollution Discharge Elimination System (NPDES) permit requirements. The SSMP should identify the officials who will receive immediate notification;
- Procedures to ensure that appropriate staff and contractor personnel are aware of and follow the Emergency Response Plan and are appropriately trained;
- Procedures to address emergency operations, such as traffic and crowd control and other necessary response activities; and
- A program to ensure that all reasonable steps are taken to contain untreated wastewater and prevent discharge of untreated wastewater to waters of the United States and minimize or correct any adverse impact on the environment resulting from the SSOs, including such accelerated or additional monitoring as may be necessary to determine the nature and impact of the discharge.

6.2 Goals

The City's goals with respect to responding to SSOs are:

- Respond quickly to minimize the volume of the SSO;
- Eliminate the cause of the SSO;
- Contain the spilled wastewater to the extent feasible;
- Minimize public contact with the spilled wastewater;
- Mitigate the impact of the SSO; and
- Meet the regulatory reporting requirements.

6.3 SSO Notification Procedure

The processes that are employed to notify the City of the occurrence of an SSO include: observation by the public, receipt of an alarm, or observation by City Staff during the normal course of their work. The City of Rio Dell has a *Sanitary Sewer Overflow and Backup*

Response Plan. The *Sanitary Sewer Overflow and Backup Response Plan* contains the procedures for receiving sewage overflow/backup reports.

Public Observation

During normal business hours calls regarding SSOs are received by City Hall (707) 764-3532. City Hall personnel will contact the Wastewater Superintendent who will dispatch responders. In cases when the Wastewater Superintendent is not available, the Lead Utility Worker will be contacted who will dispatch responders.

After normal working hours calls regarding SSOs are received by the Rio Dell Police Department (RDPD). The RDPD will contact on-call wastewater staff using a pager that is assigned to staff on a weekly basis. The on-call wastewater staff will be the initial responder to SSOs. If the situation warrants, additional utility workers will be contacted to respond. In complex SSOs the Wastewater Superintendent and or the Director of Public Works will be contacted for additional support and guidance. Information from the SSO and SSO response will be provided by the responders to the Wastewater Superintendent who will make the necessary regulatory reports. The regulatory notification responsibility and requirements are included in the *Sanitary Sewer Overflow and Backup Response Plan*.

Receipt of Alarm

The lift stations are monitored by the Supervisory Control and Data Acquisition (SCADA) system. The SCADA system is monitored at the wastewater treatment plant control room and is also programmed to autodial the Wastewater Superintendent and then Water Superintendent by telephone in the case of an alarm condition.

City Staff Observation

City staff conducts periodic inspections of its sewer system facilities as part of their routine activities. Any problems noted with the sewer system facilities are reported to appropriate City staff who respond to emergency situations. The City of Rio Dell is developing an electronic work order system utilizing SEMs Software Suite.

6.4 SSO Response Procedures

Sewer service calls and lift station alarms are considered high priority events that demand a prompt response to the location of the problem. The response procedure is outlined in the *Sanitary Sewer Overflow and Backup Response Plan*. The goals of the *Sanitary Overflow and Backup Emergency Response Plan* is to protect the public from hazards, identify source of overflow and determine ownership, perform cleanup and abatement, complete proper reporting procedures and provide good customer service. The *Sanitary Sewer Overflow and Backup Response Plan* provides detailed response procedures for the first responder and field crew responsible for identifying the source of the problem, correcting the cause of the overflow, and cleaning the surrounding area. The *Sanitary Sewer Overflow and Backup Response Plan* includes reporting forms for the responder to complete.

6.5 Priorities

The first responder's priorities are:

- To follow safe work practices;
- To respond promptly with the appropriate equipment;
- To contain the spill wherever feasible;

- To restore the flow as soon as practicable;
- To minimize public access to and/or contact with the spilled sewage;
- To promptly notify the Wastewater Superintendent or the Public Works Director in the event of any SSO;
- To return the spilled sewage to the sewer system; and
- To restore the area to its original condition (or as close as possible).

6.6 Safety During Response

The first responder is responsible for following safety procedures on all jobs. Special safety precautions must be observed when performing sewer work.

There may be times when City personnel responding to a sewer system event are not familiar with potential safety hazards peculiar to sewer work. In such cases, it is appropriate to take the time to discuss safety issues, consider the order of work, and check safety equipment before starting the job.

The first responder must assess the scene for hazards to the responders and/or the public. After completing the job hazard analysis the responder will:

- Utilize control devices such as signs, cones, delineators, lights, barricades, when work encroaches in lane(s) of traffic, or in an area subject to pedestrian or vehicle traffic;
- Utilize Personal Protection Equipment such as gloves; hardhat; safety glasses; safety vest; and splash goggles as needed; and
- Utilize proper lifting, pulling and bending techniques when removing a sanitary sewer access cover to protect the responders back.

6.7 Initial Response

The first responder must respond to the reported location or lift station site and visually check for potential sewer stoppages or overflows. All sewer system calls require a response to the reported location of the event.

The first responder will:

- Note arrival time at spill site;
- Verify the existence of a sewer system spill or backup;
- Identify and assess the affected area and extent of spill;
- Contact caller if time permits; and
- Notify the Wastewater Superintendent and Director of Public Works in the event of a major SSO.

The SSO is considered major if the following conditions are present:

- The spill appears to be large, in a sensitive area, or there is doubt regarding the extent, impact, or how to proceed;
- The spill is in a public roadway and help with traffic control is needed to protect workers and the public; or
- If additional help is needed. The Utility Worker or Wastewater Superintendent will contact other employees, contractors, and/or equipment suppliers.

If spill is large or in a sensitive area, the responder will document conditions with photographs as time allows.

During the response to a major SSO City staff will need to decide whether to proceed with actions to restore the flow or to initiate containment measures. The guidance for this decision is:

- Small spills – proceed with restoring flow;
- Moderate or large spill where containment is anticipated to be simple – proceed with the containment measures; or
- Moderate or large spills where containment is anticipated to be difficult – proceed with restoring flow; however, call for additional assistance after 15 minutes without restoration of flow and implement containment measures.

6.8 Initial Spill Containment Measures

The first responder should attempt to contain the spilled sewage using the following steps:

- Determine the immediate destination of the overflowing sewage;
- Plug storm drains using air plugs, sandbags, and/or plastic mats to contain the spill, whenever appropriate. If overflowing sewage has entered the storm drainage system during dry weather, attempt to contain the spilled sewage by plugging downstream storm drainage facilities;
- Contain/direct the spilled sewage using dike/dam or sandbags; and
- Pump around the blockage/pipe failure/lift station.

6.9 Recovery and Cleanup

The recovery and cleanup phase begins when the flow has been restored and the overflow of sewage has been stopped. The City can use contract services for recovery and cleanup actions. Typically, the SSO recovery and cleanup procedures include an estimate of spill volume, recovery of spilled sewage and cleanup and disinfection of the area.

Estimate the Volume of Spilled Sewage

Wherever possible, document the estimate using photos of the SSO site before the recovery operation. Various detailed methods of spill volume estimating are included in the *Sanitary Sewer Overflow and Backup Response Plan Field Guide*.

Recovery of Spilled Sewage

Vacuum or pump the spilled sewage and discharge it back into the sanitary sewer system.

Cleanup and Disinfection

Cleanup and disinfection procedures should be implemented to reduce the potential for human health issues and adverse environmental impacts that are associated with an SSO event. The procedures described are for dry weather conditions and should be modified as required for wet weather conditions. Where cleanup is beyond the capabilities of City staff, a cleanup contractor will be used.

Cleanup Involving Private Property

- Offer assistance with cleanup and advise resident or property owner of claim procedures; and
- Contact insurance for damage assessment.

Cleanup of Hard Surface Areas

- Collect all signs of sewage solids and sewage-related material either by hand or with the use of rakes and brooms;
- Wash down the affected area with clean water until the water runs clear. Take reasonable steps to contain and vacuum up the wash water;
- Disinfect all areas that were contaminated from the overflow using the disinfectant solution. Apply minimal amounts of the disinfectant solution using a hand sprayer. Document the volume and application method of disinfectant that was employed; and
- Allow area to dry. Repeat the process if additional cleaning is required.

Cleanup of Landscaped and Unimproved Natural Vegetation

- Collect all signs of sewage solids and sewage-related material either by hand or with the use of rakes and brooms;
- Wash down the affected area with clean water until the water runs clear. The flushing volume should be approximately three times the estimated volume of the spill;
- Either contain or vacuum up the wash water so that none is released; and
- Allow the area to dry. Repeat the process if additional cleaning is required.

Steps for Cleanup of Natural Waterways

- The Department of Fish and Game should be notified in the event an SSO impacts any surface water or riparian habitat. Fish and Game will provide the professional guidance needed to effectively cleanup spills that occur in these sensitive environments;
- Cleanup should proceed quickly in order to minimize negative impact. Sewage causes depletion of dissolved oxygen which will kill aquatic life; and
- Any water that is used in the cleanup should be de-chlorinated prior to use (chlorine compounds are toxic to aquatic life).

Wet Weather Cleanup Modifications

- Omit flushing and sampling during heavy storm events with heavy runoff where flushing is not required and sampling would not provide meaningful results.

6.10 Public Notification

Post signs and place barricades to keep vehicles and pedestrians away from contact with spilled sewage. Do not remove the signs until directed by the Wastewater Superintendent. Creeks and streams that have been contaminated as a result of an SSO should have signs posted at visible access locations until the risk of exposure has subsided to acceptable background levels. The warning signs should be checked every day to ensure that they are still in place.

In the event that an overflow occurs at night, the location should also be inspected the following day. The Utility Worker should look for any signs of sewage solids and sewage-related material that may warrant additional cleanup activities.

Major spills may warrant broader public notice. The Public Works Director will contact the City's designated Information Officer who will contact local media when significant areas may have been contaminated by sewage.

New reporting requirements as of February 2008 require that for any discharge of sewage that results in a discharge to a drainage channel or surface water, the City shall notify the following entities as soon as possible, but not later than 2 hours after becoming aware of the discharge.

- State Office of Emergency Services
- Humboldt County Department of Health and Human Services
- Regional Water Quality Control Board

In addition, the City must confirm that it notified these agencies within 24 hours after becoming aware of the discharge. The confirmation must be made to the Regional Water Quality Control Board.

6.11 Water Quality Sampling and Testing

Water quality sampling and testing is required whenever 500 gallons or more of spilled sewage enters surface water to determine the extent and impact of the SSO. The water quality sampling procedures are:

- The first responder will collect samples if required. Samples should be collected as soon as possible after the discovery of the SSO event.
- The water quality samples should be collected from upstream of the spill, from the spill area, and downstream of the spill in flowing water (e.g. creeks). The water quality samples should be collected near the point of entry of the spilled sewage and every 100 feet along the shore on impoundments (e.g. ponds).
- The City's laboratory and contract laboratory will analyze the samples to determine the nature and extent of the discharge. Additional samples will be taken to determine when posting of warning signs can be discontinued. The basic analyses should include total coliform, fecal coliform, biochemical oxygen demand (BOD), dissolved oxygen, and ammonia nitrogen.

6.12 SSO Investigation and Documentation

All SSOs should be thoroughly investigated and documented for use in managing the sewer system and meeting established reporting requirements. The procedures for investigating and documenting SSOs include a failure analysis investigation, SSO documentation, and post-SSO debriefing.

Failure Analysis Investigation

The objective of the failure analysis investigation is to determine the "root cause" of the SSO and to identify corrective action(s) needed that will reduce or eliminate future potential for the SSO to recur.

The investigation should include reviewing all relevant data to determine appropriate corrective action(s) for the line segment. The investigation should include:

- Reviewing and completing the SSO Reporting Form;

- Reviewing past maintenance records;
- Reviewing available photographs;
- Conducting inspections to determine the condition of the line segment immediately following the SSO and reviewing the video and logs; and
- Interviewing staff who responded to the spill.

The product of the failure analysis investigation should be the determination of the root cause and the identification of the corrective actions.

SSO Documentation

The first responder will complete the Sanitary Sewer Overflow Reporting Form found in the *Sanitary Sewer Overflow and Backup Response Plan*.

The Wastewater Superintendent will prepare a file for each individual SSO. The file should include the following information:

All SSOs

- Initial service calls information;
- Sanitary Sewer Overflow Reporting Form;
- Failure analysis investigation results; and
- SWRCB California Integrated Water Quality System (CIWQS) Report(s).

Large SSOs and/or SSOs to sensitive areas

- Volume estimate;
- Appropriate maps showing the spill location;
- Photographs of spill location; and
- Water quality sampling and test results.

Post SSO Event Debriefing

Every SSO event is an opportunity to thoroughly evaluate the response and reporting procedures. Each overflow event is unique, with its own elements and challenges including volume, cause, location, terrain, and other parameters.

As soon as possible after major SSO events, all of the participants, from the person who received the call to the last person to leave the site, should meet to review the procedures used and to discuss what worked and where improvements could be made in responding to and mitigating future SSO events. The results of the debriefing will be recorded and tracked to ensure the action items are completed.

6.13 SSO Reporting

The internal and external reporting process for SSO events that are intended to meet the SWRCB requirements are summarized below. Category 1 and 2 SSOs are defined as:

Category 1 SSO – Category 1 SSO refers to all discharges of sewage resulting from a failure in the City’s sanitary sewer system that:

- Equal or exceed 1,000 gallons; or
- Result in a discharge to a drainage channel and/or surface water; or

- Discharge to a storm drainpipe that was not fully captured and returned to the sanitary sewer system.

Category 2 SSO – Category 2 SSO refers to all other discharges of sewage resulting from a failure in the City’s sanitary sewer system that are not Category 1 SSOs.

Internal SSO Reporting Procedures Category 1 SSOs

The first responder will immediately notify the Wastewater Superintendent (working hours or after hours) who will in turn notify the Public Works Director.

The Wastewater Superintendent (working hours or after hours) will meet with field crew(s) at the site of the SSO event to assess the situation and to document the conditions with photos.

The first responder will fill out the Sanitary Sewer Overflow Reporting Form and turn it in as soon as possible to the Wastewater Superintendent (working hours or after hours).

In the event of a very large overflow or an overflow in a sensitive area, the Public Works Director will notify the City Manager. The City Manager may notify the City Council.

Category 2 SSOs

The first responder will fill out the Sanitary Sewer Overflow Report contained within the SSO Packet and turn it in to the Wastewater Superintendent by the start of the next work day.

External SSO Reporting Requirements Category 1 SSOs

New reporting requirements as of February 2008 require that for any discharge of sewage that results in a discharge to a drainage channel or surface water, the Wastewater Superintendent or Public Works Director shall notify the following entities as soon as possible, but not later than 2 hours after becoming aware of the discharge:

- State Office of Emergency Services (and obtain a Spill Control Number)
- Humboldt County Department of Health and Human Services
- Regional Water Quality Control Board

In addition, the City must confirm that it notified these agencies within 24 hours after becoming aware of the discharge. The confirmation must be made to the Regional Water Quality Control Board.

The Wastewater Superintendent will prepare an initial electronic report using the California Integrated Water Quality System (CIWQS) within three working days of completion of the response and mitigation activities. The Wastewater Superintendent will certify the report. The report will include the information to meet the SWRCB requirements.

The Wastewater Superintendent will prepare a final electronic report using CIWQS within fifteen calendar days of completion of the response and mitigation activities. The Wastewater Superintendent will certify the report. The final report will include the information to meet the SWRCB requirements.

Category 2 SSOs

The Wastewater Superintendent will prepare an electronic report using CIWQS within 30 calendar days following the month that the spill occurred in. The Wastewater Superintendent will certify the report. The report will include the information to meet the SWRCB requirements.

Negative Spill Reports

If there are no SSOs during the calendar month, the City will provide, within 30 days after the end of each calendar month, a statement using CIWQS certifying that there were no SSOs for the designated month. The Wastewater Superintendent will certify the report.

CIWQS Not Available

In the event that CIWQS is not available, the City will fax all required information to the RWQCB in accordance with the time schedules identified above. In such event, the City must also enter all required information into CIWQS as soon as practical. The RWQCB Fax number is (707) 523-0135.

6.14 Equipment

This section provides a list of specialized equipment that is required to support this *Sanitary Sewer Overflow and Backup Response Plan*.

Digital Camera

A digital or disposable camera is required to record the conditions upon arrival, during cleanup, and upon departure.

Emergency Response Truck

A utility body pickup truck is required to store and transport the equipment needed to effectively respond to sewer emergencies. The equipment and tools should include spilled sewage containment and cleanup materials.

GIS System

A GIS based mapping program stores latitude and longitude data for every manhole in the Rio Dell sewer system and will be used to determine the location of SSOs.

Portable Pumps and Hoses

Portable pumps and piping will be used to pump around failed facilities and to recover spilled sewage. Portable pumps and hoses are available through local rental agencies. The portable pump required to support this plan is a 4-inch pump.

Vacuum Truck

The City of Rio Dell has a Vactor truck and has access to additional vacuum trucks through a mutual aid agreement being developed with the City of Fortuna.

6.15 Training

This section provides information on the training that is required to support this *Sanitary Sewer Overflow and Backup Response Plan*.

Initial and Annual Refresher Training

All Public Works personnel and contractors who have a role in responding to, reporting, and/or mitigating a sewer system overflow will receive training. This includes employees who serve as the afterhours on-call maintenance crew member. All new employees and contractors receive training before they are placed in a position where they may have to respond. Current employees receive annual refresher training on this plan and the procedures to be followed.

SSO Response Drills

Periodic training drills are held to ensure that employees and contractors are up to date on the procedures, the equipment is in working order, and the required materials are readily available. The training drills should cover scenarios typically observed during sewer related emergencies (e.g. mainline blockage, mainline failure, force main failure, lift station failure, and lateral blockage). The results and the observations during the drills should be recorded and action items should be tracked to ensure completion. This training will also include desk simulation of SSO exercises to be incorporated with weekly safety and equipment training.

Record Keeping

Records should be kept of all training that is provided in support of this plan. The records for all scheduled training courses and for each overflow emergency response training event should include date, place, content, name of trainer(s), and names of attendees. Records for the SSO response training will be maintained by the Public Works Administrator.

ELEMENT 7: FATS, OILS AND GREASE (FOG) CONTROL PROGRAM

The intent of this section of the SSMP is to document the City's FOG Program and identify program additions.

7.1 Regulatory Requirements for the FOG Program

The City shall evaluate its service area to determine whether a FOG control program is needed. If the City determines that a FOG program is not needed, the City must provide justification for why it is not needed. If FOG is found to be a problem, the City must prepare and implement a FOG source control program to reduce the amount of these substances discharged to the sanitary sewer system. The FOG source control program shall include the following as appropriate:

- An implementation plan and schedule for a public education outreach program that promotes proper disposal of FOG;
- A plan and schedule for the disposal of FOG generated within the sanitary sewer system service area. This may include a list of acceptable disposal facilities and/or additional facilities needed to adequately dispose of FOG generated within a sanitary sewer system service area;
- The legal authority to prohibit discharges to the system and identify measures to prevent SSOs and blockages caused by FOG;
- Requirements to install grease removal devices (such as traps or interceptors) design standards for the grease removal devices, maintenance requirements, BMP requirements, record keeping and reporting requirements;
- Authority to inspect grease producing facilities, enforcement authorities, and whether the City has sufficient staff to inspect and enforce the FOG ordinance;
- An identification of sewer system sections subject to FOG blockages and establish a cleaning maintenance schedule for each section; and
- Development and implementation of source control measures, for all sources of FOG discharged to the sewer system, for each sewer system section identified above.

The City of Rio Dell is in the process of developing a FOG program as well as updating the Sewer Use Ordinance. The goal for completing these tasks is December 2012.

7.2 Public Education and Outreach Program

The City of Rio Dell is currently developing a FOG policy. The policy will include public education and outreach during the FOG application process, the inspection process and through the schools sewer use program sponsored by the California Water Environmental Association.

7.3 FOG Source Control

The City of Rio Dell is currently developing a FOG source control policy. The policy will include a FOG permit application and FOG permit.

7.4 Disposal of FOG

The City of Rio Dell is currently developing a FOG policy. Currently there are three FOG haulers in the area including Footprint Recycling, North State Rendering, and Steve's Septic.

7.5 Legal Authority for FOG Program

Legal authority for the Rio Dell FOG Program is contained within the Rio Dell Municipal Code Chapter 13.10.

1. Prevent illicit discharges into its wastewater collection system (examples may include infiltration and inflow (I/I), storm water, chemical dumping, unauthorized debris and cut roots, etc.);
RDMC, Article II, Connections, Installation of Service 13.10.040. (Pretreatment and screening).
RDMC, Article II, Connections, Installation of Service 13.10.220. (Building sewers, laterals and connections), (6) Down Spouts/Roof Drain.
RDMC, Article II, Connections, Installation of Service 13.10.220. (Building sewers, laterals and connections), (9) Maintenance of Building Sewer.
RDMC, Article IV, Services 13.10.340. (Sewage not to be discharged so as to result in contamination, pollution or nuisance).
RDMC, Article IV, Services 13.10.400. (Prohibited discharges of uncontaminated waters).
RDMC, Article IV, Services 13.10.410. (Prohibited discharges of enumerated wastes.).
RDMC, Article IV, Services 13.10.420. (Discharges – Criteria)
2. Limit the discharge of fats, oils, and grease and other debris that may cause blockages;
RDMC, Article II, Connections, Installation of Service 13.10.040. (Pretreatment and screening).
RDMC, Article IV, Services 13.10.430. (Interceptors – Required).
RDMC, Article IV, Services 13.10.440. (Interceptors – Maintenance).
RDMC, Article IV, Services 13.10.450. (Inspections and sampling).
3. Enforce any violation of its sewer policies;
RDMC, Article IV, Services 13.10.330. (Nuisance abatement).
RDMC, Article IV, Services 13.10.350. (Abatement of contamination).
RDMC, Article IV, Services 13.10.360. (Issuance of peremptory abatement order – Report to regional board – Prosecution of injunction proceedings).
RDMC, Article IV, Services 13.10.370. (Discharge of sewage or other waste resulting in contamination a misdemeanor).
RDMC, Article IV, Services 13.10.380. (Abatement procedures).
RDMC, Article IV, Services 13.10.460. (Issuance of cease and desist orders).
RDMC, Article IV, Services 13.10.470. (Submission of time schedules).
RDMC, Article IV, Services 13.10.480. (Termination of service).

RDMC, Article IV, Services 13.10.490. (Immediate suspension of service).

RDMC, Article IV, Services 13.10.510. (Violation is a misdemeanor).

7.6 Requirements to Install Grease Removal Devices

RDMC, Article II, Connections, Installation of Service 13.10.040. (Pretreatment and screening).

RDMC, Article IV, Services 13.10.430. (Interceptors – Required).

RDMC, Article IV, Services 13.10.440. (Interceptors – Maintenance).

RDMC, Article IV, Services 13.10.450. (Inspections and sampling).

7.7 Authority to Inspect Grease Producing Facilities

RDMC, Article IV, Services 13.10.450. (Inspections and sampling).

7.8 Identification of Grease Problem Areas and Sewer Cleaning

The City of Rio Dell maintains a list of hot spots, primarily caused by grease blockages. Preventive maintenance on the hot spots are performed and documented every 30 to 60 days.

ELEMENT 8: SYSTEM EVALUATION AND CAPACITY ASSURANCE PLAN

This section of the SSMP discusses the City's capacity management measures, and recommended capacity improvement projects.

8.1 Regulatory Requirements for the System Evaluation and Capacity Assurance Plan

The WDR requirements for the System Evaluation and Capacity Assurance element of the SSMP are summarized below:

- **Evaluation:** The City must identify actions needed to evaluate those portions of the sewer system that are experiencing or contributing to an SSO discharge caused by hydraulic deficiency. The evaluation must provide estimates of peak flows, estimates of the capacity of key system components, hydraulic deficiencies, and the major sources that contribute to the peak flows associated with overflow events.
- **Design Criteria:** Where design criteria do not exist or are deficient, the agency should undertake the evaluation identified in the Evaluation section above to establish appropriate design criteria.
- **Capacity Enhancement Measures:** The agency must identify the steps needed to establish a short- and long-term Capital Improvement Plan (CIP) to address identified hydraulic deficiencies including prioritization, alternatives analysis, and schedules. The CIP may include increases in pipe size, I/I reduction programs, increases and redundancy in pumping capacity, and storage facilities. The CIP shall include an implementation schedule and shall identify sources of funding.
- **Schedule:** The agency shall develop a schedule of completion dates for all portions of the CIP developed in the Evaluation, Design Criteria and Capacity Enhancement Measures sections above. This schedule shall be reviewed and updated at least every five years.

8.2 Capacity Evaluation

The City has a goal of completing a complete Sewer System Assessment by December 2011.

8.3 Recommended Capacity Projects

Following the completion of the above, Sewer System Assessment projects to increase the capacity of the sewer system will be recommended.

8.4 Schedule

The City of Rio Dell recognized the critical need of improving the sewer collection and treatment system. The City has a goal of completing a complete Sewer System Assessment by December 2011 which will identify additional wastewater projects and will begin construction on major wastewater treatment plant upgrades in May 2011.

ELEMENT 9: MONITORING, MEASUREMENTS, AND PROGRAM MODIFICATIONS

This section of the SSMP discusses parameters the City tracks to monitor the success of the SSMP and how the City plans to keep the SSMP current.

9.1 Regulatory Requirements for the Monitoring, Measurements, and Program Modifications

The WDR requirements for the Monitoring, Measurement, and Program Modifications element of the SSMP are summarized below:

- Maintain relevant information that can be used to establish and prioritize appropriate SSMP activities;
- Monitor the implementation and, where appropriate, measure the effectiveness of each element of the SSMP;
- Assess the success of the preventive maintenance program;
- Update program elements, as appropriate, based on monitoring or performance evaluations; and
- Identify and illustrate SSO trends, including: frequency, location, and volume.

9.2 Monitoring Information

The City will maintain information that can be used in SSMP performance monitoring through the CIWQS database administered by the State and Regional Water Quality Control Boards to track information under the statewide general SSO order. All CIWQS information is available through the Public Reports portal at:

http://www.waterboards.ca.gov/water_issues/programs/ciwqs/publicreports.html

9.3 Performance Measures

The indicators that the City will use to measure the performance of its wastewater collection system and the effectiveness of its SSMP are:

- Total number of SSO locations per 100 miles of sewer;
- Volume of spilled wastewater recovered (million gallon (MG) per year) compared to total volume of wastewater spilled (MG/yr); and
- Volume of spilled wastewater discharged to surface waters (MG/yr) compared to total volume of wastewater spilled (MG/yr).

These parameters were selected because they are straightforward, quantitative, and focused on results. These parameters are also available to both City staff and the public at all times through the CIWQS system.

Additional performance measures include programs that the City of Rio Dell is developing for implementation as a result of the SSMP development process. These programs include:

Future Activity and Schedule	Completion Date
<ul style="list-style-type: none"> • Updating sewer use municipal code for the City of Rio Dell. 	December, 2011
<ul style="list-style-type: none"> • Establish formal mutual aid agreements with neighboring communities. 	2012
<ul style="list-style-type: none"> • Use GIS platform to generate combined wastewater and storm drainage atlas which will be utilized in the office and in the field. 	2011
<ul style="list-style-type: none"> • The City has a goal of cleaning their entire sewer system. 	2014
<ul style="list-style-type: none"> • Manhole inspections using CCTV. 	2013
<ul style="list-style-type: none"> • A system-wide CCTV inspection. Inspection data collected during the CCTV inspections is reviewed by the Public Works Director to determine whether repairs or rehabilitation/replacement are warranted. 	2013
<ul style="list-style-type: none"> • Update standards for installation rehabilitation and repair of sewer facilities. 	December, 2013
<ul style="list-style-type: none"> • The City of Rio Dell is in the process of updating their standards for installation, inspections and testing of new, rehabilitated and repaired sewer facilities. 	December, 2013
<ul style="list-style-type: none"> • The City of Rio Dell is developing a FOG program. 	2012
<ul style="list-style-type: none"> • Complete sewer system assessment. 	December, 2011

9.4 Performance Monitoring and Program Changes

The SSMP should be updated periodically to maintain current information, and programs need to be enhanced or modified if they are determined to be less effective than needed. The City will annually evaluate the performance of the wastewater collection system using the performance measures listed in Section 9.3. The City will review the successes and needed improvements of the SSMP as part of the SSMP biannual audit, described in Element 10.

City staff will update critical information, such as contact numbers and the SSO response chain of communication, as needed. A comprehensive SSMP update will occur every 5 years, as required by the SWRCB.

ELEMENT 10: SSMP PROGRAM AUDITS

The intent of this section of the SSMP is to document the City's auditing program.

10.1 Regulatory Requirements for the SSMP Program Audits

The WDR requirements for the SSMP Program Audits element of the SSMP are summarized below:

- The City shall conduct periodic internal audits appropriate to the size of the system and the number of SSOs. At a minimum, these audits must occur every two years and a report must be prepared and kept on file. This audit shall focus on evaluating the effectiveness of the SSMP and the City's compliance with the SSMP requirements, including identification of any deficiencies in the SSMP and steps to correct them.

10.2 SSMP Audits Discussion

The City will audit its SSMP every two years. The first audit will be completed prior to December 1, 2012 and will cover calendar years 2011 and 2012. The audit will determine whether the SSMP meets the current requirements of the WDR, whether the SSMP reflects the City's current practices, and whether the City is following the SSMP.

The audit will be conducted by a team consisting of the City's Public Works Department Staff. The audit team may also include members from other areas of the City, outside agencies, and/or contractors. The scope of the audit will cover each of the sections of the SSMP.

The results of the audit will be included in the Audit Report. The Audit Report may contain information about successes in implementing the most recent version of the SSMP and identify revisions that may be needed for a more effective program. Information collected as part of Element 9 Monitoring, Measurement, and Program Modifications will be used in preparing the audit. Tables, figures, and/or charts may be used to summarize information about these indicators.

The City will update its SSMP at least every five years. The first update will be completed on or before December 1, 2015.

The City will determine the need to update its SSMP more frequently based on the results of the biannual audits and the performance of its sanitary sewer system using information from the Monitoring and Measuring Program. In the event that the City decides that an update is warranted, the process to complete the update will be identified at that time. The City will complete the update within one year following identification of the need for the update.

The City Staff will seek the approval from the City Council for any significant changes to the SSMP. The authority for approval of minor changes such as employee names, contact information, or limited procedural changes is delegated to the Director of Public Works.

ELEMENT 11: COMMUNICATION PLAN

The intent of this section of the SSMP is to identify a plan to communicate information regarding the City's SSMP activities to the public. The plan includes a process for the public to receive SSMP information as well as provide input to the City on the SSMP.

11.1 Regulatory Requirements for the Communication Plan

The WDR requirements for the Communication Plan element of the SSMP are summarized below:

- The City shall communicate on a regular basis with the public on the development, implementation, and performance of its SSMP;
- The communication system shall provide the public the opportunity to provide input to the City as the program is developed and implemented; and
- The City shall create a plan of communication with systems that are tributary and/or satellite to the City's sanitary sewer system.

11.2 Communication Plan

The City has several methods for communicating information to and receiving information from the public. The following methods have been identified as alternatives that would be effective as part of the City's Communication Plan.

- **City Website** – The City will evaluate the use of a webpage on the City's existing website to facilitate the transfer of information to the public regarding the SSMP. This webpage would include the entire SSMP, audit performance information, and associated information. The webpage would also serve as a venue for soliciting input from the public on the SSMP.
- **Monthly Water and Sewer Billing** – An annual notice regarding the sanitary sewer system performance can be included in monthly water and sewer billings. The notice would contain general SSMP information. The notice could also refer the customers to the City website for additional details, if an SSMP webpage is implemented. The notice would be printed in both English and Spanish.
- **Notices in Public Spaces** – Notices of the SSMP project could be posted and handouts made available in public spaces such as the City Hall and library. Information would be presented in English and Spanish and have references to the City's website with additional information, if an SSMP webpage is implemented.
- **City Council Meetings** – City council meetings are public meetings and televised on a local broadcast station. General SSMP information and updates on sanitary sewer system performance could be added as a regular discussion item on the City Council agenda.

APPENDIX A
ORDER NUMBER 2006-003

**STATE WATER RESOURCES CONTROL BOARD
ORDER NO. 2006-0003-DWQ**

**STATEWIDE GENERAL WASTE DISCHARGE REQUIREMENTS
FOR
SANITARY SEWER SYSTEMS**

The State Water Resources Control Board, hereinafter referred to as "State Water Board", finds that:

1. All federal and state agencies, municipalities, counties, districts, and other public entities that own or operate sanitary sewer systems greater than one mile in length that collect and/or convey untreated or partially treated wastewater to a publicly owned treatment facility in the State of California are required to comply with the terms of this Order. Such entities are hereinafter referred to as "Enrollees".
2. Sanitary sewer overflows (SSOs) are overflows from sanitary sewer systems of domestic wastewater, as well as industrial and commercial wastewater, depending on the pattern of land uses in the area served by the sanitary sewer system. SSOs often contain high levels of suspended solids, pathogenic organisms, toxic pollutants, nutrients, oxygen-demanding organic compounds, oil and grease and other pollutants. SSOs may cause a public nuisance, particularly when raw untreated wastewater is discharged to areas with high public exposure, such as streets or surface waters used for drinking, fishing, or body contact recreation. SSOs may pollute surface or ground waters, threaten public health, adversely affect aquatic life, and impair the recreational use and aesthetic enjoyment of surface waters.
3. Sanitary sewer systems experience periodic failures resulting in discharges that may affect waters of the state. There are many factors (including factors related to geology, design, construction methods and materials, age of the system, population growth, and system operation and maintenance), which affect the likelihood of an SSO. A proactive approach that requires Enrollees to ensure a system-wide operation, maintenance, and management plan is in place will reduce the number and frequency of SSOs within the state. This approach will in turn decrease the risk to human health and the environment caused by SSOs.
4. Major causes of SSOs include: grease blockages, root blockages, sewer line flood damage, manhole structure failures, vandalism, pump station mechanical failures, power outages, excessive storm or ground water inflow/infiltration, debris blockages, sanitary sewer system age and construction material failures, lack of proper operation and maintenance, insufficient capacity and contractor-caused damages. Many SSOs are preventable with adequate and appropriate facilities, source control measures and operation and maintenance of the sanitary sewer system.

SEWER SYSTEM MANAGEMENT PLANS

5. To facilitate proper funding and management of sanitary sewer systems, each Enrollee must develop and implement a system-specific Sewer System Management Plan (SSMP). To be effective, SSMPs must include provisions to provide proper and efficient management, operation, and maintenance of sanitary sewer systems, while taking into consideration risk management and cost benefit analysis. Additionally, an SSMP must contain a spill response plan that establishes standard procedures for immediate response to an SSO in a manner designed to minimize water quality impacts and potential nuisance conditions.
6. Many local public agencies in California have already developed SSMPs and implemented measures to reduce SSOs. These entities can build upon their existing efforts to establish a comprehensive SSMP consistent with this Order. Others, however, still require technical assistance and, in some cases, funding to improve sanitary sewer system operation and maintenance in order to reduce SSOs.
7. SSMP certification by technically qualified and experienced persons can provide a useful and cost-effective means for ensuring that SSMPs are developed and implemented appropriately.
8. It is the State Water Board's intent to gather additional information on the causes and sources of SSOs to augment existing information and to determine the full extent of SSOs and consequent public health and/or environmental impacts occurring in the State.
9. Both uniform SSO reporting and a centralized statewide electronic database are needed to collect information to allow the State Water Board and Regional Water Quality Control Boards (Regional Water Boards) to effectively analyze the extent of SSOs statewide and their potential impacts on beneficial uses and public health. The monitoring and reporting program required by this Order and the attached Monitoring and Reporting Program No. 2006-0003-DWQ, are necessary to assure compliance with these waste discharge requirements (WDRs).
10. Information regarding SSOs must be provided to Regional Water Boards and other regulatory agencies in a timely manner and be made available to the public in a complete, concise, and timely fashion.
11. Some Regional Water Boards have issued WDRs or WDRs that serve as National Pollution Discharge Elimination System (NPDES) permits to sanitary sewer system owners/operators within their jurisdictions. This Order establishes minimum requirements to prevent SSOs. Although it is the State Water Board's intent that this Order be the primary regulatory mechanism for sanitary sewer systems statewide, Regional Water Boards may issue more stringent or more

prescriptive WDRs for sanitary sewer systems. Upon issuance or reissuance of a Regional Water Board's WDRs for a system subject to this Order, the Regional Water Board shall coordinate its requirements with stated requirements within this Order, to identify requirements that are more stringent, to remove requirements that are less stringent than this Order, and to provide consistency in reporting.

REGULATORY CONSIDERATIONS

12. California Water Code section 13263 provides that the State Water Board may prescribe general WDRs for a category of discharges if the State Water Board finds or determines that:

- The discharges are produced by the same or similar operations;
- The discharges involve the same or similar types of waste;
- The discharges require the same or similar treatment standards; and
- The discharges are more appropriately regulated under general discharge requirements than individual discharge requirements.

This Order establishes requirements for a class of operations, facilities, and discharges that are similar throughout the state.

13. The issuance of general WDRs to the Enrollees will:

- a) Reduce the administrative burden of issuing individual WDRs to each Enrollee;
- b) Provide for a unified statewide approach for the reporting and database tracking of SSOs;
- c) Establish consistent and uniform requirements for SSMP development and implementation;
- d) Provide statewide consistency in reporting; and
- e) Facilitate consistent enforcement for violations.

14. The beneficial uses of surface waters that can be impaired by SSOs include, but are not limited to, aquatic life, drinking water supply, body contact and non-contact recreation, and aesthetics. The beneficial uses of ground water that can be impaired include, but are not limited to, drinking water and agricultural supply. Surface and ground waters throughout the state support these uses to varying degrees.

15. The implementation of requirements set forth in this Order will ensure the reasonable protection of past, present, and probable future beneficial uses of water and the prevention of nuisance. The requirements implement the water quality control plans (Basin Plans) for each region and take into account the environmental characteristics of hydrographic units within the state. Additionally, the State Water Board has considered water quality conditions that could reasonably be achieved through the coordinated control of all factors that affect

water quality in the area, costs associated with compliance with these requirements, the need for developing housing within California, and the need to develop and use recycled water.

16. The Federal Clean Water Act largely prohibits any discharge of pollutants from a point source to waters of the United States except as authorized under an NPDES permit. In general, any point source discharge of sewage effluent to waters of the United States must comply with technology-based, secondary treatment standards, at a minimum, and any more stringent requirements necessary to meet applicable water quality standards and other requirements. Hence, the unpermitted discharge of wastewater from a sanitary sewer system to waters of the United States is illegal under the Clean Water Act. In addition, many Basin Plans adopted by the Regional Water Boards contain discharge prohibitions that apply to the discharge of untreated or partially treated wastewater. Finally, the California Water Code generally prohibits the discharge of waste to land prior to the filing of any required report of waste discharge and the subsequent issuance of either WDRs or a waiver of WDRs.
17. California Water Code section 13263 requires a water board to, after any necessary hearing, prescribe requirements as to the nature of any proposed discharge, existing discharge, or material change in an existing discharge. The requirements shall, among other things, take into consideration the need to prevent nuisance.
18. California Water Code section 13050, subdivision (m), defines nuisance as anything which meets all of the following requirements:
 - a. Is injurious to health, or is indecent or offensive to the senses, or an obstruction to the free use of property, so as to interfere with the comfortable enjoyment of life or property.
 - b. Affects at the same time an entire community or neighborhood, or any considerable number of persons, although the extent of the annoyance or damage inflicted upon individuals may be unequal.
 - c. Occurs during, or as a result of, the treatment or disposal of wastes.
19. This Order is consistent with State Water Board Resolution No. 68-16 (Statement of Policy with Respect to Maintaining High Quality of Waters in California) in that the Order imposes conditions to prevent impacts to water quality, does not allow the degradation of water quality, will not unreasonably affect beneficial uses of water, and will not result in water quality less than prescribed in State Water Board or Regional Water Board plans and policies.
20. The action to adopt this General Order is exempt from the California Environmental Quality Act (Public Resources Code §21000 et seq.) because it is an action taken by a regulatory agency to assure the protection of the environment and the regulatory process involves procedures for protection of the environment. (Cal. Code Regs., tit. 14, §15308). In addition, the action to adopt

this Order is exempt from CEQA pursuant to Cal.Code Regs., title 14, §15301 to the extent that it applies to existing sanitary sewer collection systems that constitute “existing facilities” as that term is used in Section 15301, and §15302, to the extent that it results in the repair or replacement of existing systems involving negligible or no expansion of capacity.

21. The Fact Sheet, which is incorporated by reference in the Order, contains supplemental information that was also considered in establishing these requirements.
22. The State Water Board has notified all affected public agencies and all known interested persons of the intent to prescribe general WDRs that require Enrollees to develop SSMPs and to report all SSOs.
23. The State Water Board conducted a public hearing on February 8, 2006, to receive oral and written comments on the draft order. The State Water Board received and considered, at its May 2, 2006, meeting, additional public comments on substantial changes made to the proposed general WDRs following the February 8, 2006, public hearing. The State Water Board has considered all comments pertaining to the proposed general WDRs.

IT IS HEREBY ORDERED, that pursuant to California Water Code section 13263, the Enrollees, their agents, successors, and assigns, in order to meet the provisions contained in Division 7 of the California Water Code and regulations adopted hereunder, shall comply with the following:

A. DEFINITIONS

1. **Sanitary sewer overflow (SSO)** - Any overflow, spill, release, discharge or diversion of untreated or partially treated wastewater from a sanitary sewer system. SSOs include:
 - (i) Overflows or releases of untreated or partially treated wastewater that reach waters of the United States;
 - (ii) Overflows or releases of untreated or partially treated wastewater that do not reach waters of the United States; and
 - (iii) Wastewater backups into buildings and on private property that are caused by blockages or flow conditions within the publicly owned portion of a sanitary sewer system.
2. **Sanitary sewer system** – Any system of pipes, pump stations, sewer lines, or other conveyances, upstream of a wastewater treatment plant headworks used to collect and convey wastewater to the publicly owned treatment facility. Temporary storage and conveyance facilities (such as vaults, temporary piping, construction trenches, wet wells, impoundments, tanks, etc.) are considered to be part of the sanitary sewer system, and discharges into these temporary storage facilities are not considered to be SSOs.

For purposes of this Order, sanitary sewer systems include only those systems owned by public agencies that are comprised of more than one mile of pipes or sewer lines.

3. **Enrollee** - A federal or state agency, municipality, county, district, and other public entity that owns or operates a sanitary sewer system, as defined in the general WDRs, and that has submitted a complete and approved application for coverage under this Order.
4. **SSO Reporting System** – Online spill reporting system that is hosted, controlled, and maintained by the State Water Board. The web address for this site is <http://ciwqs.waterboards.ca.gov>. This online database is maintained on a secure site and is controlled by unique usernames and passwords.
5. **Untreated or partially treated wastewater** – Any volume of waste discharged from the sanitary sewer system upstream of a wastewater treatment plant headworks.
6. **Satellite collection system** – The portion, if any, of a sanitary sewer system owned or operated by a different public agency than the agency that owns and operates the wastewater treatment facility to which the sanitary sewer system is tributary.
7. **Nuisance** - California Water Code section 13050, subdivision (m), defines nuisance as anything which meets all of the following requirements:
 - a. Is injurious to health, or is indecent or offensive to the senses, or an obstruction to the free use of property, so as to interfere with the comfortable enjoyment of life or property.
 - b. Affects at the same time an entire community or neighborhood, or any considerable number of persons, although the extent of the annoyance or damage inflicted upon individuals may be unequal.
 - c. Occurs during, or as a result of, the treatment or disposal of wastes.

B. APPLICATION REQUIREMENTS

1. **Deadlines for Application** – All public agencies that currently own or operate sanitary sewer systems within the State of California must apply for coverage under the general WDRs within six (6) months of the date of adoption of the general WDRs. Additionally, public agencies that acquire or assume responsibility for operating sanitary sewer systems after the date of adoption of this Order must apply for coverage under the general WDRs at least three (3) months prior to operation of those facilities.
2. **Applications under the general WDRs** – In order to apply for coverage pursuant to the general WDRs, a legally authorized representative for each agency must submit a complete application package. Within sixty (60) days of adoption of the general WDRs, State Water Board staff will send specific instructions on how to

apply for coverage under the general WDRs to all known public agencies that own sanitary sewer systems. Agencies that do not receive notice may obtain applications and instructions online on the Water Board's website.

3. Coverage under the general WDRs – Permit coverage will be in effect once a complete application package has been submitted and approved by the State Water Board's Division of Water Quality.

C. PROHIBITIONS

1. Any SSO that results in a discharge of untreated or partially treated wastewater to waters of the United States is prohibited.
2. Any SSO that results in a discharge of untreated or partially treated wastewater that creates a nuisance as defined in California Water Code Section 13050(m) is prohibited.

D. PROVISIONS

1. The Enrollee must comply with all conditions of this Order. Any noncompliance with this Order constitutes a violation of the California Water Code and is grounds for enforcement action.
2. It is the intent of the State Water Board that sanitary sewer systems be regulated in a manner consistent with the general WDRs. Nothing in the general WDRs shall be:
 - (i) Interpreted or applied in a manner inconsistent with the Federal Clean Water Act, or supersede a more specific or more stringent state or federal requirement in an existing permit, regulation, or administrative/judicial order or Consent Decree;
 - (ii) Interpreted or applied to authorize an SSO that is illegal under either the Clean Water Act, an applicable Basin Plan prohibition or water quality standard, or the California Water Code;
 - (iii) Interpreted or applied to prohibit a Regional Water Board from issuing an individual NPDES permit or WDR, superseding this general WDR, for a sanitary sewer system, authorized under the Clean Water Act or California Water Code; or
 - (iv) Interpreted or applied to supersede any more specific or more stringent WDRs or enforcement order issued by a Regional Water Board.
3. The Enrollee shall take all feasible steps to eliminate SSOs. In the event that an SSO does occur, the Enrollee shall take all feasible steps to contain and mitigate the impacts of an SSO.
4. In the event of an SSO, the Enrollee shall take all feasible steps to prevent untreated or partially treated wastewater from discharging from storm drains into

flood control channels or waters of the United States by blocking the storm drainage system and by removing the wastewater from the storm drains.

5. All SSOs must be reported in accordance with Section G of the general WDRs.
6. In any enforcement action, the State and/or Regional Water Boards will consider the appropriate factors under the duly adopted State Water Board Enforcement Policy. And, consistent with the Enforcement Policy, the State and/or Regional Water Boards must consider the Enrollee's efforts to contain, control, and mitigate SSOs when considering the California Water Code Section 13327 factors. In assessing these factors, the State and/or Regional Water Boards will also consider whether:
 - (i) The Enrollee has complied with the requirements of this Order, including requirements for reporting and developing and implementing a SSMP;
 - (ii) The Enrollee can identify the cause or likely cause of the discharge event;
 - (iii) There were no feasible alternatives to the discharge, such as temporary storage or retention of untreated wastewater, reduction of inflow and infiltration, use of adequate backup equipment, collecting and hauling of untreated wastewater to a treatment facility, or an increase in the capacity of the system as necessary to contain the design storm event identified in the SSMP. It is inappropriate to consider the lack of feasible alternatives, if the Enrollee does not implement a periodic or continuing process to identify and correct problems.
 - (iv) The discharge was exceptional, unintentional, temporary, and caused by factors beyond the reasonable control of the Enrollee;
 - (v) The discharge could have been prevented by the exercise of reasonable control described in a certified SSMP for:
 - Proper management, operation and maintenance;
 - Adequate treatment facilities, sanitary sewer system facilities, and/or components with an appropriate design capacity, to reasonably prevent SSOs (e.g., adequately enlarging treatment or collection facilities to accommodate growth, infiltration and inflow (I/I), etc.);
 - Preventive maintenance (including cleaning and fats, oils, and grease (FOG) control);
 - Installation of adequate backup equipment; and
 - Inflow and infiltration prevention and control to the extent practicable.
 - (vi) The sanitary sewer system design capacity is appropriate to reasonably prevent SSOs.

- (vii) The Enrollee took all reasonable steps to stop and mitigate the impact of the discharge as soon as possible.
7. When a sanitary sewer overflow occurs, the Enrollee shall take all feasible steps and necessary remedial actions to 1) control or limit the volume of untreated or partially treated wastewater discharged, 2) terminate the discharge, and 3) recover as much of the wastewater discharged as possible for proper disposal, including any wash down water.

The Enrollee shall implement all remedial actions to the extent they may be applicable to the discharge and not inconsistent with an emergency response plan, including the following:

- (i) Interception and rerouting of untreated or partially treated wastewater flows around the wastewater line failure;
 - (ii) Vacuum truck recovery of sanitary sewer overflows and wash down water;
 - (iii) Cleanup of debris at the overflow site;
 - (iv) System modifications to prevent another SSO at the same location;
 - (v) Adequate sampling to determine the nature and impact of the release; and
 - (vi) Adequate public notification to protect the public from exposure to the SSO.
8. The Enrollee shall properly, manage, operate, and maintain all parts of the sanitary sewer system owned or operated by the Enrollee, and shall ensure that the system operators (including employees, contractors, or other agents) are adequately trained and possess adequate knowledge, skills, and abilities.
9. The Enrollee shall allocate adequate resources for the operation, maintenance, and repair of its sanitary sewer system, by establishing a proper rate structure, accounting mechanisms, and auditing procedures to ensure an adequate measure of revenues and expenditures. These procedures must be in compliance with applicable laws and regulations and comply with generally acceptable accounting practices.
10. The Enrollee shall provide adequate capacity to convey base flows and peak flows, including flows related to wet weather events. Capacity shall meet or exceed the design criteria as defined in the Enrollee's System Evaluation and Capacity Assurance Plan for all parts of the sanitary sewer system owned or operated by the Enrollee.
11. The Enrollee shall develop and implement a written Sewer System Management Plan (SSMP) and make it available to the State and/or Regional Water Board upon request. A copy of this document must be publicly available at the Enrollee's office and/or available on the Internet. This SSMP must be approved by the Enrollee's governing board at a public meeting.

12. In accordance with the California Business and Professions Code sections 6735, 7835, and 7835.1, all engineering and geologic evaluations and judgments shall be performed by or under the direction of registered professionals competent and proficient in the fields pertinent to the required activities. Specific elements of the SSMP that require professional evaluation and judgments shall be prepared by or under the direction of appropriately qualified professionals, and shall bear the professional(s)' signature and stamp.
13. The mandatory elements of the SSMP are specified below. However, if the Enrollee believes that any element of this section is not appropriate or applicable to the Enrollee's sanitary sewer system, the SSMP program does not need to address that element. The Enrollee must justify why that element is not applicable. The SSMP must be approved by the deadlines listed in the SSMP Time Schedule below.

Sewer System Management Plan (SSMP)

- (i) **Goal:** The goal of the SSMP is to provide a plan and schedule to properly manage, operate, and maintain all parts of the sanitary sewer system. This will help reduce and prevent SSOs, as well as mitigate any SSOs that do occur.
- (ii) **Organization:** The SSMP must identify:
- (a) The name of the responsible or authorized representative as described in Section J of this Order.
 - (b) The names and telephone numbers for management, administrative, and maintenance positions responsible for implementing specific measures in the SSMP program. The SSMP must identify lines of authority through an organization chart or similar document with a narrative explanation; and
 - (c) The chain of communication for reporting SSOs, from receipt of a complaint or other information, including the person responsible for reporting SSOs to the State and Regional Water Board and other agencies if applicable (such as County Health Officer, County Environmental Health Agency, Regional Water Board, and/or State Office of Emergency Services (OES)).
- (iii) **Legal Authority:** Each Enrollee must demonstrate, through sanitary sewer system use ordinances, service agreements, or other legally binding procedures, that it possesses the necessary legal authority to:
- (a) Prevent illicit discharges into its sanitary sewer system (examples may include I/I, stormwater, chemical dumping, unauthorized debris and cut roots, etc.);

- (b) Require that sewers and connections be properly designed and constructed;
 - (c) Ensure access for maintenance, inspection, or repairs for portions of the lateral owned or maintained by the Public Agency;
 - (d) Limit the discharge of fats, oils, and grease and other debris that may cause blockages, and
 - (e) Enforce any violation of its sewer ordinances.
- (iv) **Operation and Maintenance Program.** The SSMP must include those elements listed below that are appropriate and applicable to the Enrollee's system:
- (a) Maintain an up-to-date map of the sanitary sewer system, showing all gravity line segments and manholes, pumping facilities, pressure pipes and valves, and applicable stormwater conveyance facilities;
 - (b) Describe routine preventive operation and maintenance activities by staff and contractors, including a system for scheduling regular maintenance and cleaning of the sanitary sewer system with more frequent cleaning and maintenance targeted at known problem areas. The Preventative Maintenance (PM) program should have a system to document scheduled and conducted activities, such as work orders;
 - (c) Develop a rehabilitation and replacement plan to identify and prioritize system deficiencies and implement short-term and long-term rehabilitation actions to address each deficiency. The program should include regular visual and TV inspections of manholes and sewer pipes, and a system for ranking the condition of sewer pipes and scheduling rehabilitation. Rehabilitation and replacement should focus on sewer pipes that are at risk of collapse or prone to more frequent blockages due to pipe defects. Finally, the rehabilitation and replacement plan should include a capital improvement plan that addresses proper management and protection of the infrastructure assets. The plan shall include a time schedule for implementing the short- and long-term plans plus a schedule for developing the funds needed for the capital improvement plan;
 - (d) Provide training on a regular basis for staff in sanitary sewer system operations and maintenance, and require contractors to be appropriately trained; and

- (e) Provide equipment and replacement part inventories, including identification of critical replacement parts.

(v) **Design and Performance Provisions:**

- (a) Design and construction standards and specifications for the installation of new sanitary sewer systems, pump stations and other appurtenances; and for the rehabilitation and repair of existing sanitary sewer systems; and
- (b) Procedures and standards for inspecting and testing the installation of new sewers, pumps, and other appurtenances and for rehabilitation and repair projects.

(vi) **Overflow Emergency Response Plan** - Each Enrollee shall develop and implement an overflow emergency response plan that identifies measures to protect public health and the environment. At a minimum, this plan must include the following:

- (a) Proper notification procedures so that the primary responders and regulatory agencies are informed of all SSOs in a timely manner;
- (b) A program to ensure an appropriate response to all overflows;
- (c) Procedures to ensure prompt notification to appropriate regulatory agencies and other potentially affected entities (e.g. health agencies, Regional Water Boards, water suppliers, etc.) of all SSOs that potentially affect public health or reach the waters of the State in accordance with the MRP. All SSOs shall be reported in accordance with this MRP, the California Water Code, other State Law, and other applicable Regional Water Board WDRs or NPDES permit requirements. The SSMP should identify the officials who will receive immediate notification;
- (d) Procedures to ensure that appropriate staff and contractor personnel are aware of and follow the Emergency Response Plan and are appropriately trained;
- (e) Procedures to address emergency operations, such as traffic and crowd control and other necessary response activities; and
- (f) A program to ensure that all reasonable steps are taken to contain and prevent the discharge of untreated and partially treated wastewater to waters of the United States and to minimize or correct any adverse impact on the environment resulting from the SSOs, including such accelerated or additional monitoring as may be necessary to determine the nature and impact of the discharge.

- (vii) **FOG Control Program:** Each Enrollee shall evaluate its service area to determine whether a FOG control program is needed. If an Enrollee determines that a FOG program is not needed, the Enrollee must provide justification for why it is not needed. If FOG is found to be a problem, the Enrollee must prepare and implement a FOG source control program to reduce the amount of these substances discharged to the sanitary sewer system. This plan shall include the following as appropriate:
- (a) An implementation plan and schedule for a public education outreach program that promotes proper disposal of FOG;
 - (b) A plan and schedule for the disposal of FOG generated within the sanitary sewer system service area. This may include a list of acceptable disposal facilities and/or additional facilities needed to adequately dispose of FOG generated within a sanitary sewer system service area;
 - (c) The legal authority to prohibit discharges to the system and identify measures to prevent SSOs and blockages caused by FOG;
 - (d) Requirements to install grease removal devices (such as traps or interceptors), design standards for the removal devices, maintenance requirements, BMP requirements, record keeping and reporting requirements;
 - (e) Authority to inspect grease producing facilities, enforcement authorities, and whether the Enrollee has sufficient staff to inspect and enforce the FOG ordinance;
 - (f) An identification of sanitary sewer system sections subject to FOG blockages and establishment of a cleaning maintenance schedule for each section; and
 - (g) Development and implementation of source control measures for all sources of FOG discharged to the sanitary sewer system for each section identified in (f) above.
- (viii) **System Evaluation and Capacity Assurance Plan:** The Enrollee shall prepare and implement a capital improvement plan (CIP) that will provide hydraulic capacity of key sanitary sewer system elements for dry weather peak flow conditions, as well as the appropriate design storm or wet weather event. At a minimum, the plan must include:
- (a) **Evaluation:** Actions needed to evaluate those portions of the sanitary sewer system that are experiencing or contributing to an SSO discharge caused by hydraulic deficiency. The evaluation must provide estimates of peak flows (including flows from SSOs

that escape from the system) associated with conditions similar to those causing overflow events, estimates of the capacity of key system components, hydraulic deficiencies (including components of the system with limiting capacity) and the major sources that contribute to the peak flows associated with overflow events;

- (b) **Design Criteria:** Where design criteria do not exist or are deficient, undertake the evaluation identified in (a) above to establish appropriate design criteria; and
 - (c) **Capacity Enhancement Measures:** The steps needed to establish a short- and long-term CIP to address identified hydraulic deficiencies, including prioritization, alternatives analysis, and schedules. The CIP may include increases in pipe size, I/I reduction programs, increases and redundancy in pumping capacity, and storage facilities. The CIP shall include an implementation schedule and shall identify sources of funding.
 - (d) **Schedule:** The Enrollee shall develop a schedule of completion dates for all portions of the capital improvement program developed in (a)-(c) above. This schedule shall be reviewed and updated consistent with the SSMP review and update requirements as described in Section D. 14.
- (ix) **Monitoring, Measurement, and Program Modifications:** The Enrollee shall:
- (a) Maintain relevant information that can be used to establish and prioritize appropriate SSMP activities;
 - (b) Monitor the implementation and, where appropriate, measure the effectiveness of each element of the SSMP;
 - (c) Assess the success of the preventative maintenance program;
 - (d) Update program elements, as appropriate, based on monitoring or performance evaluations; and
 - (e) Identify and illustrate SSO trends, including: frequency, location, and volume.
- (x) **SSMP Program Audits** - As part of the SSMP, the Enrollee shall conduct periodic internal audits, appropriate to the size of the system and the number of SSOs. At a minimum, these audits must occur every two years and a report must be prepared and kept on file. This audit shall focus on evaluating the effectiveness of the SSMP and the

Enrollee's compliance with the SSMP requirements identified in this subsection (D.13), including identification of any deficiencies in the SSMP and steps to correct them.

- (xi) **Communication Program** – The Enrollee shall communicate on a regular basis with the public on the development, implementation, and performance of its SSMP. The communication system shall provide the public the opportunity to provide input to the Enrollee as the program is developed and implemented.

The Enrollee shall also create a plan of communication with systems that are tributary and/or satellite to the Enrollee's sanitary sewer system.

14. Both the SSMP and the Enrollee's program to implement the SSMP must be certified by the Enrollee to be in compliance with the requirements set forth above and must be presented to the Enrollee's governing board for approval at a public meeting. The Enrollee shall certify that the SSMP, and subparts thereof, are in compliance with the general WDRs within the time frames identified in the time schedule provided in subsection D.15, below.

In order to complete this certification, the Enrollee's authorized representative must complete the certification portion in the Online SSO Database Questionnaire by checking the appropriate milestone box, printing and signing the automated form, and sending the form to:

State Water Resources Control Board
Division of Water Quality
Attn: SSO Program Manager
P.O. Box 100
Sacramento, CA 95812

The SSMP must be updated every five (5) years, and must include any significant program changes. Re-certification by the governing board of the Enrollee is required in accordance with D.14 when significant updates to the SSMP are made. To complete the re-certification process, the Enrollee shall enter the data in the Online SSO Database and mail the form to the State Water Board, as described above.

15. The Enrollee shall comply with these requirements according to the following schedule. This time schedule does not supersede existing requirements or time schedules associated with other permits or regulatory requirements.

Sewer System Management Plan Time Schedule

<u>Task and Associated Section</u>	Completion Date			
	Population > 100,000	Population between 100,000 and 10,000	Population between 10,000 and 2,500	Population < 2,500
Application for Permit Coverage Section C	6 months after WDRs Adoption			
Reporting Program Section G	6 months after WDRs Adoption ¹			
SSMP Development Plan and Schedule No specific Section	9 months after WDRs Adoption ²	12 months after WDRs Adoption ²	15 months after WDRs Adoption ²	18 months after WDRs Adoption ²
Goals and Organization Structure Section D 13 (i) & (ii)	12 months after WDRs Adoption ²		18 months after WDRs Adoption ²	
Overflow Emergency Response Program Section D 13 (vi)	24 months after WDRs Adoption ²	30 months after WDRs Adoption ²	36 months after WDRs Adoption ²	39 months after WDRs Adoption ²
Legal Authority Section D 13 (iii)				
Operation and Maintenance Program Section D 13 (iv)				
Grease Control Program Section D 13 (vii)	36 months after WDRs Adoption	39 months after WDRs Adoption	48 months after WDRs Adoption	51 months after WDRs Adoption
Design and Performance Section D 13 (v)				
System Evaluation and Capacity Assurance Plan Section D 13 (viii)				
Final SSMP, incorporating all of the SSMP requirements Section D 13				

1. In the event that by July 1, 2006 the Executive Director is able to execute a memorandum of agreement (MOA) with the California Water Environment Association (CWEA) or discharger representatives outlining a strategy and time schedule for CWEA or another entity to provide statewide training on the adopted monitoring program, SSO database electronic reporting, and SSMP development, consistent with this Order, then the schedule of Reporting Program Section G shall be replaced with the following schedule:

Reporting Program Section G	
Regional Boards 4, 8, and 9	8 months after WDRs Adoption
Regional Boards 1, 2, and 3	12 months after WDRs Adoption
Regional Boards 5, 6, and 7	16 months after WDRs Adoption

If this MOU is not executed by July 1, 2006, the reporting program time schedule will remain six (6) months for all regions and agency size categories.

2. In the event that the Executive Director executes the MOA identified in note 1 by July 1, 2006, then the deadline for this task shall be extended by six (6) months. The time schedule identified in the MOA must be consistent with the extended time schedule provided by this note. If the MOA is not executed by July 1, 2006, the six (6) month time extension will not be granted.

E. WDRs and SSMP AVAILABILITY

1. A copy of the general WDRs and the certified SSMP shall be maintained at appropriate locations (such as the Enrollee's offices, facilities, and/or Internet homepage) and shall be available to sanitary sewer system operating and maintenance personnel at all times.

F. ENTRY AND INSPECTION

1. The Enrollee shall allow the State or Regional Water Boards or their authorized representative, upon presentation of credentials and other documents as may be required by law, to:
 - a. Enter upon the Enrollee's premises where a regulated facility or activity is located or conducted, or where records are kept under the conditions of this Order;
 - b. Have access to and copy, at reasonable times, any records that must be kept under the conditions of this Order;

- c. Inspect at reasonable times any facilities, equipment (including monitoring and control equipment), practices, or operations regulated or required under this Order; and
- d. Sample or monitor at reasonable times, for the purposes of assuring compliance with this Order or as otherwise authorized by the California Water Code, any substances or parameters at any location.

G. GENERAL MONITORING AND REPORTING REQUIREMENTS

1. The Enrollee shall furnish to the State or Regional Water Board, within a reasonable time, any information that the State or Regional Water Board may request to determine whether cause exists for modifying, revoking and reissuing, or terminating this Order. The Enrollee shall also furnish to the Executive Director of the State Water Board or Executive Officer of the applicable Regional Water Board, upon request, copies of records required to be kept by this Order.
2. The Enrollee shall comply with the attached Monitoring and Reporting Program No. 2006-0003 and future revisions thereto, as specified by the Executive Director. Monitoring results shall be reported at the intervals specified in Monitoring and Reporting Program No. 2006-0003. Unless superseded by a specific enforcement Order for a specific Enrollee, these reporting requirements are intended to replace other mandatory routine written reports associated with SSOs.
3. All Enrollees must obtain SSO Database accounts and receive a "Username" and "Password" by registering through the California Integrated Water Quality System (CIWQS). These accounts will allow controlled and secure entry into the SSO Database. Additionally, within 30days of receiving an account and prior to recording spills into the SSO Database, all Enrollees must complete the "Collection System Questionnaire", which collects pertinent information regarding a Enrollee's collection system. The "Collection System Questionnaire" must be updated at least every 12 months.
4. Pursuant to Health and Safety Code section 5411.5, any person who, without regard to intent or negligence, causes or permits any untreated wastewater or other waste to be discharged in or on any waters of the State, or discharged in or deposited where it is, or probably will be, discharged in or on any surface waters of the State, as soon as that person has knowledge of the discharge, shall immediately notify the local health officer of the discharge. Discharges of untreated or partially treated wastewater to storm drains and drainage channels, whether man-made or natural or concrete-lined, shall be reported as required above.

Any SSO greater than 1,000 gallons discharged in or on any waters of the State, or discharged in or deposited where it is, or probably will be, discharged in or on any surface waters of the State shall also be reported to the Office of Emergency Services pursuant to California Water Code section 13271.

H. CHANGE IN OWNERSHIP

1. This Order is not transferable to any person or party, except after notice to the Executive Director. The Enrollee shall submit this notice in writing at least 30 days in advance of any proposed transfer. The notice must include a written agreement between the existing and new Enrollee containing a specific date for the transfer of this Order's responsibility and coverage between the existing Enrollee and the new Enrollee. This agreement shall include an acknowledgement that the existing Enrollee is liable for violations up to the transfer date and that the new Enrollee is liable from the transfer date forward.

I. INCOMPLETE REPORTS

1. If an Enrollee becomes aware that it failed to submit any relevant facts in any report required under this Order, the Enrollee shall promptly submit such facts or information by formally amending the report in the Online SSO Database.

J. REPORT DECLARATION

1. All applications, reports, or information shall be signed and certified as follows:
 - (i) All reports required by this Order and other information required by the State or Regional Water Board shall be signed and certified by a person designated, for a municipality, state, federal or other public agency, as either a principal executive officer or ranking elected official, or by a duly authorized representative of that person, as described in paragraph (ii) of this provision. (For purposes of electronic reporting, an electronic signature and accompanying certification, which is in compliance with the Online SSO database procedures, meet this certification requirement.)
 - (ii) An individual is a duly authorized representative only if:
 - (a) The authorization is made in writing by a person described in paragraph (i) of this provision; and
 - (b) The authorization specifies either an individual or a position having responsibility for the overall operation of the regulated facility or activity.

K. CIVIL MONETARY REMEDIES FOR DISCHARGE VIOLATIONS

1. The California Water Code provides various enforcement options, including civil monetary remedies, for violations of this Order.
2. The California Water Code also provides that any person failing or refusing to furnish technical or monitoring program reports, as required under this Order, or

falsifying any information provided in the technical or monitoring reports is subject to civil monetary penalties.

L. SEVERABILITY

1. The provisions of this Order are severable, and if any provision of this Order, or the application of any provision of this Order to any circumstance, is held invalid, the application of such provision to other circumstances, and the remainder of this Order, shall not be affected thereby.
2. This order does not convey any property rights of any sort or any exclusive privileges. The requirements prescribed herein do not authorize the commission of any act causing injury to persons or property, nor protect the Enrollee from liability under federal, state or local laws, nor create a vested right for the Enrollee to continue the waste discharge.

CERTIFICATION

The undersigned Clerk to the State Water Board does hereby certify that the foregoing is a full, true, and correct copy of general WDRs duly and regularly adopted at a meeting of the State Water Resources Control Board held on May 2, 2006.

AYE: Tam M. Doduc
Gerald D. Secundy

NO: Arthur G. Baggett

ABSENT: None

ABSTAIN: None



Song Her
Clerk to the Board

STATE WATER RESOURCES CONTROL BOARD

MONITORING AND REPORTING PROGRAM NO. 2006-0003-DWQ STATEWIDE GENERAL WASTE DISCHARGE REQUIREMENTS FOR SANITARY SEWER SYSTEMS

This Monitoring and Reporting Program (MRP) establishes monitoring, record keeping, reporting and public notification requirements for Order No. 2006-2003-DWQ, "Statewide General Waste Discharge Requirements for Sanitary Sewer Systems." Revisions to this MRP may be made at any time by the Executive Director, and may include a reduction or increase in the monitoring and reporting.

A. SANITARY SEWER OVERFLOW REPORTING

SSO Categories

1. Category 1 - All discharges of sewage resulting from a failure in the Enrollee's sanitary sewer system that:
 - A. Equal or exceed 1000 gallons, or
 - B. Result in a discharge to a drainage channel and/or surface water; or
 - C. Discharge to a storm drainpipe that was not fully captured and returned to the sanitary sewer system.
2. Category 2 – All other discharges of sewage resulting from a failure in the Enrollee's sanitary sewer system.
3. Private Lateral Sewage Discharges – Sewage discharges that are caused by blockages or other problems within a privately owned lateral.

SSO Reporting Timeframes

4. Category 1 SSOs – All SSOs that meet the above criteria for Category 1 SSOs must be reported as soon as: (1) the Enrollee has knowledge of the discharge, (2) reporting is possible, and (3) reporting can be provided without substantially impeding cleanup or other emergency measures. Initial reporting of Category 1 SSOs must be reported to the Online SSO System as soon as possible but no later than 3 business days after the Enrollee is made aware of the SSO. Minimum information that must be contained in the 3-day report must include all information identified in section 9 below, except for item 9.K. A final certified report must be completed through the Online SSO System, within 15 calendar days of the conclusion of SSO response and remediation. Additional information may be added to the certified report, in the form of an attachment, at any time.

The above reporting requirements do not preclude other emergency notification requirements and timeframes mandated by other regulatory agencies (local

County Health Officers, local Director of Environmental Health, Regional Water Boards, or Office of Emergency Services (OES)) or State law.

5. Category 2 SSOs – All SSOs that meet the above criteria for Category 2 SSOs must be reported to the Online SSO Database within 30 days after the end of the calendar month in which the SSO occurs (e.g. all SSOs occurring in the month of January must be entered into the database by March 1st).
6. Private Lateral Sewage Discharges – All sewage discharges that meet the above criteria for Private Lateral sewage discharges may be reported to the Online SSO Database based upon the Enrollee's discretion. If a Private Lateral sewage discharge is recorded in the SSO Database, the Enrollee must identify the sewage discharge as occurring and caused by a private lateral, and a responsible party (other than the Enrollee) should be identified, if known.
7. If there are no SSOs during the calendar month, the Enrollee will provide, within 30 days after the end of each calendar month, a statement through the Online SSO Database certifying that there were no SSOs for the designated month.
8. In the event that the SSO Online Database is not available, the enrollee must fax all required information to the appropriate Regional Water Board office in accordance with the time schedules identified above. In such event, the Enrollee must also enter all required information into the Online SSO Database as soon as practical.

Mandatory Information to be Included in SSO Online Reporting

All Enrollees must obtain SSO Database accounts and receive a "Username" and "Password" by registering through the California Integrated Water Quality System (CIWQS). These accounts will allow controlled and secure entry into the SSO Database. Additionally, within thirty (30) days of receiving an account and prior to recording SSOs into the SSO Database, all Enrollees must complete the "Collection System Questionnaire", which collects pertinent information regarding an Enrollee's collection system. The "Collection System Questionnaire" must be updated at least every 12 months.

At a minimum, the following mandatory information must be included prior to finalizing and certifying an SSO report for each category of SSO:

9. Category 2 SSOs:
 - A. Location of SSO by entering GPS coordinates;
 - B. Applicable Regional Water Board, i.e. identify the region in which the SSO occurred;
 - C. County where SSO occurred;
 - D. Whether or not the SSO entered a drainage channel and/or surface water;
 - E. Whether or not the SSO was discharged to a storm drain pipe that was not fully captured and returned to the sanitary sewer system;

- F. Estimated SSO volume in gallons;
- G. SSO source (manhole, cleanout, etc.);
- H. SSO cause (mainline blockage, roots, etc.);
- I. Time of SSO notification or discovery;
- J. Estimated operator arrival time;
- K. SSO destination;
- L. Estimated SSO end time; and
- M. SSO Certification. Upon SSO Certification, the SSO Database will issue a Final SSO Identification (ID) Number.

10. Private Lateral Sewage Discharges:

- A. All information listed above (if applicable and known), as well as;
- B. Identification of sewage discharge as a private lateral sewage discharge; and
- C. Responsible party contact information (if known).

11. Category 1 SSOs:

- A. All information listed for Category 2 SSOs, as well as;
- B. Estimated SSO volume that reached surface water, drainage channel, or not recovered from a storm drain;
- C. Estimated SSO amount recovered;
- D. Response and corrective action taken;
- E. If samples were taken, identify which regulatory agencies received sample results (if applicable). If no samples were taken, NA must be selected.
- F. Parameters that samples were analyzed for (if applicable);
- G. Identification of whether or not health warnings were posted;
- H. Beaches impacted (if applicable). If no beach was impacted, NA must be selected;
- I. Whether or not there is an ongoing investigation;
- J. Steps taken or planned to reduce, eliminate, and prevent reoccurrence of the overflow and a schedule of major milestones for those steps;
- K. OES control number (if applicable);
- L. Date OES was called (if applicable);
- M. Time OES was called (if applicable);
- N. Identification of whether or not County Health Officers were called;
- O. Date County Health Officer was called (if applicable); and
- P. Time County Health Officer was called (if applicable).

Reporting to Other Regulatory Agencies

These reporting requirements do not preclude an Enrollee from reporting SSOs to other regulatory agencies pursuant to California state law. These reporting requirements do not replace other Regional Water Board telephone reporting requirements for SSOs.

1. The Enrollee shall report SSOs to OES, in accordance with California Water Code Section 13271.

Office of Emergency Services
Phone (800) 852-7550

2. The Enrollee shall report SSOs to County Health officials in accordance with California Health and Safety Code Section 5410 et seq.
3. The SSO database will automatically generate an e-mail notification with customized information about the SSO upon initial reporting of the SSO and final certification for all Category 1 SSOs. E-mails will be sent to the appropriate County Health Officer and/or Environmental Health Department if the county desires this information, and the appropriate Regional Water Board.

B. Record Keeping

1. Individual SSO records shall be maintained by the Enrollee for a minimum of five years from the date of the SSO. This period may be extended when requested by a Regional Water Board Executive Officer.
3. All records shall be made available for review upon State or Regional Water Board staff's request.
4. All monitoring instruments and devices that are used by the Enrollee to fulfill the prescribed monitoring and reporting program shall be properly maintained and calibrated as necessary to ensure their continued accuracy;
5. The Enrollee shall retain records of all SSOs, such as, but not limited to and when applicable:
 - a. Record of Certified report, as submitted to the online SSO database;
 - b. All original recordings for continuous monitoring instrumentation;
 - c. Service call records and complaint logs of calls received by the Enrollee;
 - d. SSO calls;
 - e. SSO records;
 - f. Steps that have been and will be taken to prevent the SSO from recurring and a schedule to implement those steps.
 - g. Work orders, work completed, and any other maintenance records from the previous 5 years which are associated with responses and investigations of system problems related to SSOs;
 - h. A list and description of complaints from customers or others from the previous 5 years; and
 - i. Documentation of performance and implementation measures for the previous 5 years.
6. If water quality samples are required by an environmental or health regulatory agency or State law, or if voluntary monitoring is conducted by the Enrollee or its agent(s), as a result of any SSO, records of monitoring information shall include:

- a. The date, exact place, and time of sampling or measurements;
- b. The individual(s) who performed the sampling or measurements;
- c. The date(s) analyses were performed;
- d. The individual(s) who performed the analyses;
- e. The analytical technique or method used; and,
- f. The results of such analyses.

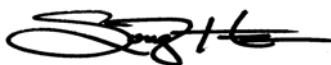
C. Certification

1. All final reports must be certified by an authorized person as required by Provision J of the Order.
2. Registration of authorized individuals, who may certify reports, will be in accordance with the CIWQS' protocols for reporting.

Monitoring and Reporting Program No. 2006-0003 will become effective on the date of adoption by the State Water Board.

CERTIFICATION

The undersigned Clerk to the Board does hereby certify that the foregoing is a full, true, and correct copy of a resolution duly and regularly adopted at a meeting of the State Water Board held on May 2, 2006.



Song Her
Clerk to the Board

APPENDIX B

ORDER NUMBER WQ 2008-002-EXEC

STATE OF CALIFORNIA
STATE WATER RESOURCES CONTROL BOARD

ORDER NO. WQ 2008-0002-EXEC

ADOPTING AMENDED MONITORING AND REPORTING REQUIREMENTS FOR
STATEWIDE GENERAL WASTE DISCHARGE REQUIREMENTS FOR SANITARY SEWER
SYSTEMS

The State of California, Water Resources Control Board (State Water Board) finds:


1. The State Water Board is authorized to prescribe statewide general waste discharge requirements for categories of discharges that involve the same or similar operations and the same or similar types of waste pursuant to Water Code 13263, subdivision (i).
2. The State Water Board on May 2, 2006, adopted Statewide General Waste Discharge Requirements for Sanitary Sewer Systems, Order No. 2006-0003-DWQ, pursuant to that authority.
3. The State Water Board on May 2, 2006, adopted Monitoring and Reporting Requirements to implement the General Waste Discharge Requirements for Sanitary Sewer Systems.
4. State Water Board Order No. 2006-0003-DWQ, paragraph G.2., and the Monitoring and Reporting Requirements, both provide that the Executive Director may modify the terms of the Monitoring and Reporting Requirements at any time.
5. The time allowed in those Monitoring and Reporting Requirements for the filing of the initial report of an overflow is too long to adequately protect the public health and safety or the beneficial uses of the waters of the state when there is a sewage collection system spill. An additional notification requirement is necessary and appropriate to ensure the Office of Emergency Services, local public health officials, and the applicable regional water quality control board are apprised of a spill that reaches a drainage channel or surface water.
6. Further, the burden of providing a notification as soon as possible is de minimis and will allow response agencies to take action as soon as possible to protect public health and safety and beneficial uses of the waters of the state.

IT IS HEREBY ORDERED THAT:

Pursuant to the authority delegated by Resolution No. 2002-0104 and Order No. 2006-0003-DWQ, the Monitoring and Reporting Requirements for Statewide General Waste Discharge Requirements for Sanitary Sewer Systems No. 2006-0003-DWQ is hereby amended as shown in Attachment A, with new text indicated by double-underline.

Dated:

February 20, 2008



Dorothy Rice
Executive Director

ATTACHMENT A

STATE WATER RESOURCES CONTROL BOARD MONITORING AND REPORTING PROGRAM NO. 2006-0003-DWQ (AS REVISED BY ORDER NO. WQ 2008-0002-EXEC)

STATEWIDE GENERAL WASTE DISCHARGE REQUIREMENTS FOR SANITARY SEWER SYSTEMS

This Monitoring and Reporting Program (MRP) establishes monitoring, record keeping, reporting and public notification requirements for Order No. 2006-2003-DWQ, "Statewide General Waste Discharge Requirements for Sanitary Sewer Systems." Revisions to this MRP may be made at any time by the Executive Director, and may include a reduction or increase in the monitoring and reporting.

NOTIFICATION

Although State and Regional Water Board staff do not have duties as first responders, this Monitoring and Reporting Program is an appropriate mechanism to ensure that the agencies that do have first responder duties are notified in a timely manner in order to protect public health and beneficial uses.

1. For any discharges of sewage that results in a discharge to a drainage channel or a surface water, the Discharger shall, as soon as possible, but not later than two (2) hours after becoming aware of the discharge, notify the State Office of Emergency Services, the local health officer or directors of environmental health with jurisdiction over affected water bodies, and the appropriate Regional Water Quality Control Board.
2. As soon as possible, but no later than twenty-four (24) hours after becoming aware of a discharge to a drainage channel or a surface water, the Discharger shall submit to the appropriate Regional Water Quality Control Board a certification that the State Office of Emergency Services and the local health officer or directors of environmental health with jurisdiction over the affected water bodies have been notified of the discharge.

A. SANITARY SEWER OVERFLOW REPORTING

SSO Categories

1. Category 1 - All discharges of sewage resulting from a failure in the Enrollee's sanitary sewer system that:
 - A. Equal or exceed 1000 gallons, or
 - B. Result in a discharge to a drainage channel and/or surface water; or
 - C. Discharge to a storm drainpipe that was not fully captured and returned to the sanitary sewer system.

2. Category 2 – All other discharges of sewage resulting from a failure in the Enrollee's sanitary sewer system.
3. Private Lateral Sewage Discharges – Sewage discharges that are caused by blockages or other problems within a privately owned lateral.

SSO Reporting Timeframes

4. Category 1 SSOs – Except as provided above, all SSOs that meet the above criteria for Category 1 SSOs must be reported as soon as: (1) the Enrollee has knowledge of the discharge, (2) reporting is possible, and (3) reporting can be provided without substantially impeding cleanup or other emergency measures. Initial reporting of Category 1 SSOs must be reported to the Online SSO System as soon as possible but no later than 3 business days after the Enrollee is made aware of the SSO. Minimum information that must be contained in the 3-day report must include all information identified in section 9 below, except for item 9.K. A final certified report must be completed through the Online SSO System, within 15 calendar days of the conclusion of SSO response and remediation. Additional information may be added to the certified report, in the form of an attachment, at any time.

The above reporting requirements are in addition to do not preclude other emergency notification requirements and timeframes mandated by other regulatory agencies (local County Health Officers, local Director of Environmental Health, Regional Water Boards, or Office of Emergency Services (OES)) or State law.

5. Category 2 SSOs – All SSOs that meet the above criteria for Category 2 SSOs must be reported to the Online SSO Database within 30 days after the end of the calendar month in which the SSO occurs (e.g. all SSOs occurring in the month of January must be entered into the database by March 1st).
6. Private Lateral Sewage Discharges – All sewage discharges that meet the above criteria for Private Lateral sewage discharges may be reported to the Online SSO Database based upon the Enrollee's discretion. If a Private Lateral sewage discharge is recorded in the SSO Database, the Enrollee must identify the sewage discharge as occurring and caused by a private lateral, and a responsible party (other than the Enrollee) should be identified, if known.
7. If there are no SSOs during the calendar month, the Enrollee will provide, within 30 days after the end of each calendar month, a statement through the Online SSO Database certifying that there were no SSOs for the designated month.
8. In the event that the SSO Online Database is not available, the enrollee must fax all required information to the appropriate Regional Water Board office in

accordance with the time schedules identified above. In such event, the Enrollee must also enter all required information into the Online SSO Database as soon as practical.

Mandatory Information to be Included in SSO Online Reporting

All Enrollees must obtain SSO Database accounts and receive a "Username" and "Password" by registering through the California Integrated Water Quality System (CIWQS). These accounts will allow controlled and secure entry into the SSO Database. Additionally, within thirty (30) days of receiving an account and prior to recording SSOs into the SSO Database, all Enrollees must complete the "Collection System Questionnaire", which collects pertinent information regarding an Enrollee's collection system. The "Collection System Questionnaire" must be updated at least every 12 months.

At a minimum, the following mandatory information must be included prior to finalizing and certifying an SSO report for each category of SSO:

9. Category 2 SSOs:

- A. Location of SSO by entering GPS coordinates;
- B. Applicable Regional Water Board, i.e. identify the region in which the SSO occurred;
- C. County where SSO occurred;
- D. Whether or not the SSO entered a drainage channel and/or surface water;
- E. Whether or not the SSO was discharged to a storm drain pipe that was not fully captured and returned to the sanitary sewer system;
- F. Estimated SSO volume in gallons;
- G. SSO source (manhole, cleanout, etc.);
- H. SSO cause (mainline blockage, roots, etc.);
- I. Time of SSO notification or discovery;
- J. Estimated operator arrival time;
- K. SSO destination;
- L. Estimated SSO end time; and
- M. SSO Certification. Upon SSO Certification, the SSO Database will issue a Final SSO Identification (ID) Number.

10. Private Lateral Sewage Discharges:

- A. All information listed above (if applicable and known), as well as;
- B. Identification of sewage discharge as a private lateral sewage discharge; and
- C. Responsible party contact information (if known).

11. Category 1 SSOs:

- A. All information listed for Category 2 SSOs, as well as;
- B. Estimated SSO volume that reached surface water, drainage channel, or not recovered from a storm drain;
- C. Estimated SSO amount recovered;
- D. Response and corrective action taken;
- E. If samples were taken, identify which regulatory agencies received sample results (if applicable). If no samples were taken, NA must be selected.
- F. Parameters that samples were analyzed for (if applicable);
- G. Identification of whether or not health warnings were posted;
- H. Beaches impacted (if applicable). If no beach was impacted, NA must be selected;
- I. Whether or not there is an ongoing investigation;
- J. Steps taken or planned to reduce, eliminate, and prevent reoccurrence of the overflow and a schedule of major milestones for those steps;
- K. OES control number (if applicable);
- L. Date OES was called (if applicable);
- M. Time OES was called (if applicable);
- N. Identification of whether or not County Health Officers were called;
- O. Date County Health Officer was called (if applicable); and
- P. Time County Health Officer was called (if applicable).

Reporting to Other Regulatory Agencies

These reporting requirements do not preclude an Enrollee from reporting SSOs to other regulatory agencies pursuant California state law. These reporting requirements do not replace other Regional Water Board telephone reporting requirements for SSOs.

1. The Enrollee shall report SSOs to OES, in accordance with California Water Code Section 13271.

Office of Emergency Services
Phone (800) 852-7550

2. The Enrollee shall report SSOs to County Health officials in accordance with California Health and Safety Code Section 5410 et seq.
3. The SSO database will automatically generate an e-mail notification with customized information about the SSO upon initial reporting of the SSO and final certification for all Category 1 SSOs. E-mails will be sent to the appropriate County Health Officer and/or Environmental Health Department if the county desires this information, and the appropriate Regional Water Board.

B. Record Keeping

1. Individual SSO records shall be maintained by the Enrollee for a minimum of five years from the date of the SSO. This period may be extended when requested by a Regional Water Board Executive Officer.

[2. Omitted.]

3. All records shall be made available for review upon State or Regional Water Board staff's request.
4. All monitoring instruments and devices that are used by the Enrollee to fulfill the prescribed monitoring and reporting program shall be properly maintained and calibrated as necessary to ensure their continued accuracy;
5. The Enrollee shall retain records of all SSOs, such as, but not limited to and when applicable:
 - a. Record of Certified report, as submitted to the online SSO database;
 - b. All original recordings for continuous monitoring instrumentation;
 - c. Service call records and complaint logs of calls received by the Enrollee;
 - d. SSO calls;
 - e. SSO records;
 - f. Steps that have been and will be taken to prevent the SSO from recurring and a schedule to implement those steps.
 - g. Work orders, work completed, and any other maintenance records from the previous 5 years which are associated with responses and investigations of system problems related to SSOs;
 - h. A list and description of complaints from customers or others from the previous 5 years; and
 - i. Documentation of performance and implementation measures for the previous 5 years.
6. If water quality samples are required by an environmental or health regulatory agency or State law, or if voluntary monitoring is conducted by the Enrollee or its agent(s), as a result of any SSO, records of monitoring information shall include:
 - a. The date, exact place, and time of sampling or measurements;
 - b. The individual(s) who performed the sampling or measurements;
 - c. The date(s) analyses were performed;
 - d. The individual(s) who performed the analyses;
 - e. The analytical technique or method used; and,
 - f. The results of such analyses.


C. Certification

1. All final reports must be certified by an authorized person as required by Provision J of the Order.
2. Registration of authorized individuals, who may certify reports, will be in accordance with the CIWQS' protocols for reporting.

Monitoring and Reporting Program No. 2006-0003 will become effective on the date of adoption by the State Water Board. The notification requirements added by Order No. WQ 2008-0002-EXEC will become effective upon issuance by the Executive Director.

CERTIFICATION

The undersigned Clerk to the Board does hereby certify that the foregoing is a full, true, and correct copy of an order amended by the Executive Director of the State Water Board.



Jeanne Townsend
Clerk to the Board

APPENDIX C
RIO DELL MUNICIPAL ORDINANCE 190
RIO DELL MUNICIPAL CODE CHAPTER 13.10
RIO DELL MUNICIPAL CODE CHAPTER 15.05

ORDINANCE NO. 190

AN ORDINANCE BY THE CITY COUNCIL OF THE CITY OF RIO DELL REPEALING ORDINANCES NO'S 29, 31, 37, 40, 51, 52, 74, 76, 114, 133, 148, 149, 154 AND 156 AND ANY OTHER ORDINANCE IN CONFLICT HEREWITH AS RELATES TO THE RIO DELL SANITARY SEWER SYSTEM.

The City Council of the City of Rio Dell does herewith ordain as follows;

This Ordinance shall be the governing rules and regulations in all matters pertaining to the Rio Dell Sanitary Sewer System and operations and shall be known as the "SEWER" Ordinance.

ARTICLE 1. IN GENERAL

SECTION 1. DEFINITIONS.

For the purposes of this chapter, the following words and phrases shall have the meanings respectively ascribed to them by this section;

APPLICANT: shall mean an owner of property who applies for Sanitary Sewer Service to such property (hereinafter referred to as sewer).

CONSUMER: shall mean any person to whom the City supplies Sewer Service under a contract, either expressed or implied, to make payment therefor.

COST: shall include labor, material, transportation, expense, supervision engineering and other necessary overhead expense.

DEPARTMENT: shall mean the Sewer Department of the City.

EXTENSION: shall mean Sewer main extension, or system of collection lateral.

LEGAL OR EQUITABLE OWNER: shall mean any owner of record, mortgage, trustee or contract purchaser of real property.

MAIN: shall mean a Sewer main in the sewer collection system of the City without regard to sizing.

COUNCIL: shall mean the City Council or the City Manager acting under authority of the City Council.

DEPARTMENT HEAD: shall mean the Director of Public Works of the City.

SERVICE CONNECTION OR LATERALS: shall be understood to designate the laying of pipes from the main to the property line inclusively.

SECTION 2. DEPARTMENT RULES AND REGULATIONS: MODIFYING RATES ETC.

The Council reserves the right and power to, from time to time to adopt rules and regulations for the operation and maintenance of the Sewer Department of the City, and for furnishing Sewer service, and may likewise establish and modify the rates, charges and penalties established and imposed by this ordinance, and may from time to time prescribe rules for the extension of Sewer collection within and beyond the boundaries of the City.

SECTION 3. SETTLEMENT OF DISPUTES BETWEEN CONSUMER AND CITY.

If a dispute shall arise between any Sewer customer and the City concerning Sewer service or the amount of sewer billed to such consumer, the dispute may be settled subject to the approval of the council by the City Manager. The final decision and settlement of any such dispute shall be recorded in the minutes of the council. The provisions and procedures provided for in this section are permissive only and shall in no way affect the other provisions of this Ordinance.

ARTICLE II. CONNECTIONS, INSTALLATION OF SERVICE ETC.

SECTION 4. Domestic sewage consisting essentially of human waste, may be passed into the sewers without screening. Industrial waste must be examined prior to discharge into the City sewer system by the Director of Public Works and if he deems it necessary, such wastes must be given preliminary treatments and be screened prior to their discharge into the City Sewer System. The type of treatment and screening shall be subject to the Director of Public Works sole discretion.

No person shall suffer or permit any premises belonging to or occupied by or under his control, any cellar, vault, cesspool, privy, sewer or private drain thereon, to become foul or offensive and detrimental to the health or public comfort.

SECTION 5. No person owning, occupying or having under his control any premises, shall connect their vault, cesspool, privy, sewer or private drain, with any waterway, watercourse or ditch in the City.

SECTION 6. DISTANCE OF SEWER OR GAS SERVICE FROM WATER SERVICE.

No ditch, water pipe, gas pipe or any other service shall be installed or maintained nearer than two feet in any direction to any sewer service pipe or main.

SECTION 7. REPAIRS TO SEWER LINES BY THE CITY.

The City, shall at its own expense, make all repairs necessary to sewer pipe lines connecting with mains. The City shall make no repair or do any work whatsoever on the sewer pipe line beyond the connection to private property.

SECTION 8. SHUTTING OFF WATER.

The City reserves the right to shut off the water supply to any premises at any time, for the purpose of making sewer line repairs, extensions or other necessary purposes or for any infraction of this ordinance or any overdue payment or delinquency of payment of any City utility service billing.

SECTION 9. RIGHT OF ENTRY OF CITY EMPLOYEES FOR PURPOSE OF MAKING INSPECTIONS.

Any authorized employee of the City shall have reasonable access to any premises with sewer service for the purpose of making inspections of the sewer system upon such premises. Any person who, as owner or occupant of any premises, refuses admittance to, or hinders or prevents inspection by an authorized employee of the City, after service of notice of intention shall have all water shut off to the said premises.

SECTION 10. TURNING WATER OFF OR ON IN EMERGENCY (Rendering Sewer Service In-Operateable)

The City shall have the right in an emergency, to turn the water off or on without notice, but it shall be the duty of the water department to make reasonable effort to notify all consumers that the water is to be turned off or on.

SECTION 11. UNLAWFUL USE, INJURY, ETC., OF EQUIPMENT, ETC.

It shall be unlawful for any person to open any manhole or to interfere in any manner with any street sewer service, connection or any service pipe connected with main's or to tap any sewer service pipe, without paying the established costs therefore after having made written application therefore as provided by this chapter or in any way to trespass upon the public property of the sewer department, without written permission first being obtained from the Director of Public Works.

SECTION 12. APPLICATION FOR SERVICE - FORM.

Before any Sewer Service will be supplied by the City to any person which requires a connection or reconnection to the City owned mains any real property, the owner of the property shall make a written application from such service and service connection, upon a form provided by the City. Such form shall be substantially as shown in Exhibit "A" attached hereto and by reference incorporated herein.

SECTION 13. FEEES FOR NEW SEWER SERVICE CONNECTIONSS.

There shall be a new service connection fee of \$950.00 required for each individual dwelling, residence, building, or separate service to any multiple use consumer on any parcel or parcels under the same ownership. This fee is levied in addition to any actual costs by the City to provide the new service and shall be received into the sewer fund for purposes of operational expenditures.

SECTION 14. CHARGES FOR INSTALLING SEWER SERVICES.

There shall be a charge set apart from any other charge or fee for actual costs to the City for the installation of any sewer mains or system laterals to any private property or other consumer, provided further that such a charge shall be a minimum of \$200.00 or actual costs, whichever is higher. Sizes, locations and connection methods shall be at the sole discretion of the Public Works Director.

B 1,150.00 total

SECTION 15. INSTALLATIONS AND CONNECTIONS OUTSIDE CITY LIMITS.

Notwithstanding any other sections, the connection fees and installation charges for outside the City limits shall be 150 percent of those same fees and charges for inside the City limits.

SECTION 16. RECONNECTION FEES.

There shall be herewith established a reconnection fee for use when abandoned services are requested to be reactivated, or when a service has been disconnected because of failure to pay City utility bills, and are delinquent or for other reasons such as vandalism of City owned property, system piping, etc. (refer to Section 25 of this ordinance). The reconnection fee shall be two hundred dollars (\$200.00) plus the actual costs involved in the reconnection as will be billed by the Director of Public Works (refer definitions of "COST" in Section 1 of this ordinance and provisions of Section 25 of this ordinance).

SECTION 17. PREREQUISITIES TO MULTIPLE SERVICE CONNECTIONS.

No sewer shall be served to two or more parcels of property separately owned through a common service pipe. When more than one occupancy is placed on the same parcel of property and each is conducting a separately established residence of business, a separate sewer line shall be required and installed for each occupancy.

Where there is a pre-existing multiple use sewer service, the City shall establish additional accounts and charges for each additional commercial, professional, dwelling, or living units situated upon the premises not served by an individual sewer.

SECTION 18. USE OF SEWER BY CONTRACTORS AND OTHER PERSONS IN CONSTRUCTION WORK

Contractors or any person desiring to use the sewer system in construction work where disposal must be made other than through a permanent sewer; in each and every case must make written application for and obtain a written permit for the same from the sewer department before connecting with any main, and shall make the deposit required by the sewer department. Such permit shall be exhibited upon the work for which it has been issued during the full time the sewer is being used pursuant to such permit.

SECTION 19. SUPPLYING TO OTHER THAN OCCUPANT OF PREMISES.

It shall be unlawful for any person to provide sewer service to any other person other than the occupants of the premises of such consumer as provided through an approved collection system.

SECTION 20. CONSUMERS TO ACCEPT SERVICE CONDITIONS.

All applicants for service connections or sewer service shall be required to accept such conditions of service as are provided by the system at the location of the proposed service connection and to hold the department harmless from all damages arising from conditions or interruptions of service not expressly caused by the Sewer System.

SECTION 21.

It shall be unlawful to maintain or use any residence, place of business or other building or place where persons reside, congregate, or are employed which is not provided with means for the disposal of sewage, either by flush toilet connected with a sewage system approved by the City of Rio Dell City Engineer, or when it is judged permissible by the County Health Officer, a septic tank which meets the requirements of construction and maintenance as required by the said County Health Department.

It shall be unlawful for any person to construct or maintain any privy, cesspool, septic tank, sewage treatment works, sewer pipes or conduits, or other pipes or conduits for the treatment or discharge of sewage or impure waters or any matter of substance offensive, injurious or dangerous to health whereby they shall do any of the following;

(a) Overflow any lands whatever;

(b) Empty, flow, seep, drain into or affect any springs, streams, river, lakes or other waters within the City of Rio Dell, provided however, in with respect to existing septic tanks, sewage treatment works, sewer pipes or conduits or other pipes or conduits for the treatment or discharge of sewage or impure waters, it would be impossible to comply with the provisions of this section of this ordinance, the County Health Officer shall have the power by special permit to allow such variations from the provisions contained in this section as will prevent unnecessary hardship or injustice and at the same time most nearly accomplish the general purpose and intent hereof.

It shall be unlawful for any person, firm or corporation to construct, build, or rebuild any place of residence or other building or place where persons congregate, reside or are employed which is not to be connected to an approved public sanitary sewer without first submitting plans of the means of sewage disposal to the City Engineer and obtaining a permit therefore as herein provided. Such plans shall include the plot plan of the premises with sufficient elevations, the size and type of septic tank, and a plan of the absorption field, giving all dimensions and other pertinent information. No sewage disposal installation shall be made without inspection. A copy of each inspection report shall be filed with the Health Officer.

SECTION 22. BUILDING SEWERS, LATERALS, AND CONNECTIONS.

Permit Required. No person shall construct a building sewer, lateral sewer or make a connection with any public sewer without first obtaining a written permit from the City and paying all fees and connection charges as required.

Design and Construction Requirements; Design and construction of building sewers and lateral sewers shall be in accordance with the requirements of the City and to the approval of the City Engineer.

Separate Sewers; No two adjacent buildings fronting on the same street shall be permitted to join the use of the same side sewer. Every building or industrial facility must be separately connected with a public sewer if such public sewer exists in the street upon which the property abuts or in an easement which will serve said property. However, two or more buildings located on property belonging to the same owner may be served with the same side sewer provided the property cannot be subdivided into smaller legal-sized lots.

Old Building Sewers; Old building sewers may be used in connection with new buildings only when they are found, upon examination and test by the Director of Public Works, to meet all requirements of the City.

Cleanouts; Cleanouts in building sewers shall be provided in accordance with the rules, regulations and ordinances of the City. All cleanouts shall be maintained watertight.

Down Spouts/Roof Drains; Down spouts or roof drains shall not discharge rainwater or storm runoff into the building lateral or any sewer connection.

Sewer Too Low; In all buildings hereafter constructed in which any building sewer is too low to permit gravity flow to the public sewer, sanitary sewage carried by such building sewer shall be lifted by artificial means, approved by the Director of Public Works, and discharged to the public sewer at the expense of the owner.

Connection to Public Sewer; The connection of the building sewer into the sewer system shall be made at the applicant's expense. The applicant shall extend the building sewer to the property line, at which point it shall be the responsibility of the City to connect the building sewer to the City system lateral. Any damage to the lateral sewer shall be repaired at the cost of the applicant to the satisfaction of the Director of Public Works.

Maintenance of Building Sewer; Building sewers shall be free of infiltration and be maintained by the owner of the property served thereby.

PUBLIC SEWER CONSTRUCTION

Permit Required; No person shall construct, extend or connect to any public sewer without first obtaining a written permit from the City and paying all fees and connection charges and furnishing bonds as required. The provision of this section requiring permits shall not be construed to apply to contractors construction sewers and appurtenances under contracts awarded and entered into by the City.

Plans, Profiles and Specifications Required; The application for a permit for public sewer construction shall be accompanied by three (3) complete sets of plans, profiles and specifications, complying with all applicable ordinances, rules and regulations of the City prepared by a registered civil engineer showing all details of the proposed work based on an accurate survey of the ground. The application, together with the plans, profiles and specifications shall be examined by the City Engineer who shall within twenty (20) days approve them as filed or require them to be modified as he deems necessary for proper installation. When the City Engineer is satisfied that the proposed work is proper and the plans, profiles, and specifications are sufficient and correct, he shall order the issuance of a permit predicted upon the payment of all connection charges, fees and furnishing bonds as required by the City. The permit shall prescribe such terms and conditions as the City Engineer finds necessary in the public interest.

Subdivisions; The requirements of this section of this ordinance shall be fully complied with before any final subdivision map shall be approved by the City Council. The final subdivision map shall provide for the dedication for public use of streets, easements or rights-of-way in which public sewer lines are to be constructed. If a final subdivision map of a tract is recorded and the work of constructing sewers to serve the tract is not completed within the time limit allowed in the permit, the City Council may extend the time limit or may complete the work and take appropriate steps to enforce the provisions of the bond furnished by the subdivider.

Easements or Right-Of-Way; In the event that an easement is required for the extension of the public sewer or the making of connections, the applicant shall procure and have accepted by the City a proper easement or grant of right-of-way having a minimum width of ten (10) feet sufficient in law to allow the laying and maintenance of such extension or connection.

Persons Authorized to Perform Work; Only properly licensed contractors and City forces shall be authorized to perform the work of public sewer construction within the City. All terms and conditions of the permit issued by the City to the applicant shall be binding on the contractor.

Compliance with Local Regulations; Any person constructing a sewer within a street shall comply with all State, County or City laws, ordinances, rules and regulations pertaining to the cutting or pavement opening, barricading, lighting, and protecting of trenches, backfilling and repaving thereof shall obtain all permits and pay all fees required by the department having jurisdiction prior to the issuance of a permit of the City.

Design and Construction Standards; Design and construction of sewers within the City must be approved by the City Engineer. Three (3) complete sets of "as-bult" drawings showing the actual location of all mains, structures, wyes, and laterals shall be filed with the City before final acceptance of the work.

Completion of Sewer Required; Before any acceptance of any sewer line by the City and prior to the admission of any sewage into the system, the sewer line shall be tested and shall be complete to the satisfaction of the City Engineer.

EXHIBIT "A"

APPLICATION FOR SEWER SERVICE FROM
THE CITY OF RIO DELL.

APPLICATION FROM:

DATE: _____

NAME (PROPERTY OWNER) _____

ADDRESS (PROPERTY OWNER) _____

PHONE _____

LOCATION OF PREMISES TO BE SERVED: _____

(MAILING ADDRESS) _____

DESCRIPTION OF PREMISES TO BE SERVED:

(TYPE OF BUILDING) _____

DATE SERVICE REQUESTED: _____

CONDITIONS:

A. NEW SERVICE, \$ _____ REQUIRED TO ACCOMPANY THIS APPLICATION,
ACKNOWLEDGING ACTUAL COSTS THEREFORE TO THE CITY ARE ALSO THE RESPONSIBILITY OF
THE APPLICANT AND WILL BE BILLED ACCORDINGLY.

B. RECONNECTION, \$ _____ REQUIRED TO ACCOMPANY THIS APPLICATION,
ACKNOWLEDGING ACTUAL COSTS THEREFORE TO THE CITY ARE ALSO THE RESPONSIBILITY OF
THE APPLICANT AND WILL BE BILLED ACCORDINGLY.

INDICATE TYPE OF APPLICATION: A _____ B. _____

BY SIGNING THIS APPLICATION, THE APPLICANT AGREES TO OBSERVE ANY CITY REGULATIONS
NOW OR HEREAFTER ADOPTED RELATED TO THE SEWER SERVICE AND TO PAY SEWER BILLS
PROMPTLY. ALL UNPAID RATES AND CHARGES AND PENALTIES MAY BE COLLECTED BY SUIT
AND DEFENDANT SHALL PAY ALL COSTS OF SUIT IN ANY JUDGEMENT IN FAVOR OF CITY.

Receipt No. _____ By: _____

Date; _____

Signature of Applicant, Owner

ARTICLE III. TES, CHARGES AND BILLING:

SECTION 23. Rates, Charges and Billings;

(a) Rates, effective as determined with passage of this ordinance are composed of two separate elements for use in monthly billing;

(1) A uniform "System" fee applied to each service regardless of size and whether or not any service is used (a disconnected service shall not be required to pay this fee, but will be subject to a connection or reconnection fee as provided in Sections 13 thru 17 of this ordinance).

(2) A usage cost at the following rates;

<u>USER CLASSIFICATION</u>	<u>MONTHLY CHARGE</u>
Residential	\$ 7.50
Apartments	\$ 7.50
Barber & Beauty Shops	\$ 7.50
Retail Establishments	\$ 7.50
Office Buildings	\$ 7.50
Halls & Churches	\$ 7.50
Mobil Homes	\$ 7.50
Motels	\$12.60/mo. plus \$.67 per 100 cu. ft. of water over 1,510 cu. ft.
Primary School	\$19.20/mo. plus \$.39 per 100 cu. ft. of water over 4,290 cu. ft.
Elementary School	\$19.20/mo. plus \$.53 per 100 cu. ft. of water over 3,150 cu. ft.
Restaurants & Lounges	\$11.40/mo. plus \$1.92 per 100 cu.ft. of water over 600 cu.ft.
Bowling Alley	\$22.50/mo. plus \$.64 per 100 cu.ft. of water over 3,125 cu.ft.
Grocery Stores	\$10.60/mo. plus 1.93 per 100 cu. ft. of water over 1,225 cu.ft.
Service Stations & Garages	\$11.20/mo. plus \$.71 per 100 cu.ft. of water over 1,225 cu.ft.
Laundries	\$39.50/mo. plus \$.49 per 100 cu.ft. of water over 1,225 cu.ft.
Bars	\$11.40/mo. plus \$.64 per 100 cu.ft. of water over 1,390 cu.ft.
Car Washes	\$20.00/mo. plus \$.32 per 100 cu.ft. of water over 4,000 cu.ft.
Doctor's and Dental Offices Clinics and Laboratories	\$9.20/mo. plus \$.44 per 100 cu.ft. of water over 1,140 cu. ft.
Convalescent Homes	\$9.20/mo. plus \$.59 per 100 cu.ft. of water over 1,140 cu. ft.
Recreational Vehicle Parks	\$10.00/mo. plus \$2.50 per space. plus \$0.15 per each 10 cu. ft. over 10,750 cu. ft.

*Amended
by Ord. 231*

(\$10.00 Minimum)

(b) All Sewer billing shall be monthly to coincide with water billing, scheduled for posting and delivery on the first day of each month following water meter readings. utility bills are due and payable from the first day of each month at the Rio Dell City Hall.

Utility bills not having been paid before the next following billing shall be considered to be delinquent and no further notice will be provided other than on the said next following billing reflecting two months of service are outstanding.

Should water payment in full not be received within ten calendar days from the said second billing, then shut-off notices shall be issued and the water service discontinued until payment of all outstanding billings is made in full. (Refer to Section 25 of this Ordinance), provided further that no such shut-off will occur on a Friday unless specifically directed by the Director of Public works.

(c) Sewer service billing shall be assessed against the person or persons who reside in or otherwise occupy the premises being served and identified as the person or persons having completed an application for sanitary sewer service as a non-owner resident of the premises, and after having deposited \$30.00 as surety against any sewer service charges sustained during the said non-owner occupancy or control of the said premises, whereupon the depositor shall receive a numbered receipt which shall be required to be presented at demand of all or any part of a refund of any balance of deposit remaining after any and all current sanitary sewer service charges are satisfied.

However, and notwithstanding the above, owners of real property rented, leased occupied or in any manner controlled by non-owners, shall be liable for any unpaid sewer service not paid by the said non-owners, with such unpaid amounts due and payable prior to any continued use of any said premises, and the water to such premises shall therefore also be discontinued in order to cause the sewer service to become inoperatable pending settlement of outstanding utility bills.

(d) In any case served by the Rio Dell Sewer System, either in or out-side of the City limits shall pay the following monthly rates as a minimum:

- (1) Inside City limits the same as Section 23 (a) above.
- (2) Outside City limits, 150 percent of the total minimum rate in effect in Section 23 (a) above.

(e) All sewer billing is due and payable at the Rio Dell City Hall and payments not made before the next following billing shall be deemed to be delinquent and Ten Calendar days thereafter, without benefit of further notice, delinquent services will be discontinued. (Refer to Section 23 (b) of this Ordinance).

SECTION 24. Discontinuance of Service for Non-Payment.

In the event that any customer shall be delinquent in the payment of his sewer bill, the department shall have the right forthwith and without further notice to discontinue water service to the premises of such delinquent customer and water shall not again be supplied to him or to the premises until all delinquent city utility bills and charges for reconnection have been paid.

SECTION 25. Procedure for Restoring Service After Delinquency.

If water service is cut off or discontinued for failure to pay delinquent city utility bills, such service may again be established only in the event the customer, or the owner of the premises served pays all delinquent bills and charges as may be required by this ordinance.

When an owner or customer has been delinquent in his sewer bills twice in succession or three times in any one 12 month period, he shall be required to pay a late payment fee of Ten Dollars (\$10.00). Said late payment fee shall be increased by ten Dollars (\$10.00) for each succeeding late payment.

up to a maximum fee of two hundred dollars (\$200.00). Thereupon and not otherwise, will water service again be made or established to the premises where the bill has been delinquent. (thus allowing sewer service).

ARTICLE IV. SERVICES:

SECTION 26. To Remain City Property; Repairs by City.

All sewer pipes in public property are the property of the City and the City will maintain and repair them when in its judgement such repairs are needed.

SECTION 27. One Service to Lot or Parcel of Land; Exception.

There shall be at least one sewer service on each lot or parcel of real property which is improved with a dwelling or building thereon, except where one building occupies more than one lot, then only one service for such building shall be required.

SECTION 28. Connection Service Pipe to System - Premises to be left as Originally Found Upon Completion of Tests; Notice to City; Liability of Plumber and Customer.

Any plumber or any other person connecting private sewer service pipe to the property side of a City sewer must leave the City system in as good condition as found, and shall notify the City at the time the connection is made. Any damage caused by the negligence or carelessness of any plumber or other person to any part of the connection, must be paid by such plumber or person to the City on demand.

SECTION 29. Same - Bill to be Rendered After Connection.

The sewer department of the City may connect to any City sewer service pipe at any time it shall deem it expedient to do so, and render a corrected bill from the date of installation of such connection.

SECTION 30. Same - Liability of Customer for Damages to System.

After the sewer service is so connected any damage resulting from malace, carelessness or negligence of the customer or any member of his family, or anyone employed by him, and any damage which may result from hot water or steam from a boiler, or otherwise, shall be paid for by such customer to the City on presentation of a bill therefore; and in case such bill is not paid, the water shall be shut off to the premises without further notice, and the same shall not be turned on until all charges are paid.

SECTION 31. Cutting off or Interfering With Sewer Service

It shall be unlawful for any person to interfere with or cut off or remove a sewer service from where it has been installed without first receiving written permission from the Director of Public Works. Such permission shall be granted only for the purpose of tests, replacements, repairs or service pipes, read-justment of service or similar emergency.

SECTION 32. Application for Stopping Sewer Service Bill to Be Rendered.

Upon the written notice of the owner of a building or premises to have the sewer service stopped, the city shall have the water shut off, and at the time record the reading of the meter and render a bill in a sum which shall be the amount according to the rates and charges provided for herein.

SECTION 33. Nuisance Abatement.

Any nuisance, contamination, pollution, or infiltration, as defined herein existing on any parcel of land in the City of Rio Dell may be abated as provided herein. The procedure for said abatement provided herein shall not be exclusive, but shall be cumulative and in addition to any other abatement procedure provided by the laws of the State of California or the ordinances of the City or Rio Dell.

SECTION 34. Sewage, Etc., Not to be Discharged So As to Result in Contamination, Pollution or Nuisance.

No person shall discharge sewage or other waste, or the effluent of treated sewage or other waste, in any manner which will result in contamination, pollution or a nuisance.

SECTION 35. Abatement Of Contamination.

Whenever any local health officer or enforcement official finds that a contamination exists, the officer or official shall order the contamination abated, as provided in this ordinance.

SECTION 36. Issuance of Preemptory Abatement Order; Report To Regional Board; Prosecution of Injunction proceedings.

The local health officer or enforcement official may issue a preemptory order requiring the abatement of a contamination and shall immediately furnish to the proper regional board a report of information and data relating thereto. Coincident with issuing such order, or if any order or regulation is not complied with, the local health officer or enforcement official may bring and prosecute an action for an injunction in the Superior Court of the County of Humboldt.

The local health officer of Humboldt County shall render to persons subject to such order all possible assistance in complying with the order including all possible assistance in securing any necessary funds for such purpose.

SECTION 37. Discharge Of Sewage Or Other Waste Resulting in Contamination A Misdemeanor.

Any person who discharges sewage or other waste in any manner which results in contamination is guilty of a misdemeanor. Any person, firm or corporation who violates or refuses or fails to comply with any of the provisions of this ordinance shall be guilty of a misdemeanor and shall be punished upon conviction of a fine of not less than twenty-five dollars (\$25.00) nor more than five hundred dollars (\$500.00) or by imprisonment in the County jail for not more than six (6) months or by both such fine and imprisonment.

SECTION 40. Abatement Procedures.

The procedure for abatement of a contamination, pollution, nuisance, or infiltration including but not limited to notice of such abatement, recordation of lis pendens, time and place of hearing order of the Council, accounting of costs and receipts, hearing on account and proposed assessment, recordation of lien, and collection with ordinary taxes, shall follow essentially the same procedure as provided for in the City of Rio Dell Ordinance Number 71, as amended providing for the establishment of a procedure for the abatement of nuisances and making the cost of such abatement a special assessment upon a parcel of land so involved.

SECTION 41. Repeals Previous Ordinances.

Any Ordinance or parts of ordinances in conflict with or superceded by this ordinance are hereby repealed, including but not limited to Ordinance Numbers, 29, 31, 37, 40, 51, 52, 74, 76, 114, 133, 148, 149, 154, and 156.

SECTION 42. Liability.

This Ordinance shall not be construed as imposing upon the City of Rio Dell any liability or responsibility for damage resulting from the defective construction of any sanitary disposal system as herein provided nor shall the City of Rio Dell or any official or employee thereof or the Humboldt County Health Officer be held as assuming any such liability or responsibility by reason of the inspection authorized thereunder.

SECTION 43. Constitutionality.

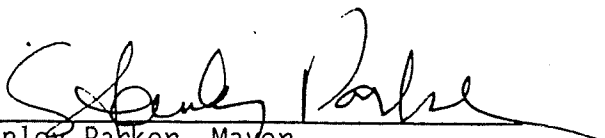
If any section, sub-section, sentence, clause or phrase of this ordinance is for any reason held to be invalid or unconstitutional by the decision of any court of competent jurisdiction, such decision shall not affect the validity of the remaining portions of the ordinance. The City Council of the City of Rio Dell, State of California, hereby declares that it would have passed this ordinance and each section, sub-section, sentence, clause and phrase thereof, irrespective of the fact that any one or more other sections, sub-sections, clauses or phrases be declared invalid or unconstitutional.

SECTION 44. Urgency Measure.

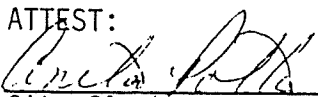
This ordinance shall be and is hereby declared to be an emergency measure and shall take effect immediately, being for the immediate preservation of the public peace, health, safety and welfare, in that the City has an urgent need to cure deficit spending by the municipal utility.

ADOPTED THIS 27th day of January 1987 by the following vote;

AYES: Parker, Moranda, Feack, McKnight
NOES: None
ABSENT: Blakely


Stanley Parker, Mayor

ATTEST:


City Clerk.

13.10.040 Pretreatment and screening.

Domestic sewage consisting essentially of human waste may be passed into the sewers without screening. Industrial waste must be examined prior to discharge into the City sewer system by the Director of Public Works and, if he deems it necessary, such wastes must be given preliminary treatment and be screened prior to their discharge into the City sewer system. The type of treatment and screening shall be subject to the Director of Public Works' sole discretion.

No person shall suffer or permit any premises belonging to or occupied by or under his control, any cellar, vault, cesspool, privy, sewer or private drain thereon, to become foul or offensive and detrimental to the health or public comfort. [Ord. 190 § 4, 1987.]

13.10.050 Connections prohibited.

No person owning, occupying or having under his control any premises shall connect their vault, cesspool, privy, sewer or private drain with any waterway, watercourse or ditch in the City. [Ord. 190 § 5, 1987.]

13.10.060 Distance of sewer or gas service from water service.

No ditch, water pipe, gas pipe or any other service shall be installed or maintained nearer than two feet in any direction to any sewer service pipe or main. [Ord. 190 § 6, 1987.]

13.10.070 Repairs to sewer lines by the City.

The City shall, at its own expense, make all repairs necessary to sewer pipe lines connecting with mains. The City shall make no repair or do any work whatsoever on the sewer pipe line beyond the connection to private property. [Ord. 190 § 7, 1987.]

13.10.080 Shutting off water.

The City reserves the right to shut off the water supply to any premises at any time, for the purpose of making sewer line repairs, extensions or other necessary purposes or for any infraction of this chapter or any overdue payment or delinquency of payment of any City utility service billing. [Ord. 190 § 8, 1987.]

13.10.090 Right of entry of City employees for the purpose of making inspections.

Any authorized employee of the City shall have reasonable access to any premises with sewer service for the purpose of making inspections of the sewer system upon such premises. Any person who, as owner or occupant of any premises, refuses admittance to or hinders or prevents inspection by an authorized employee of the City, after service of notice of intention, shall have all water shut off to the said premises. [Ord. 190 § 9, 1987.]

13.10.100 Turning water off or on in an emergency – Rendering sewer service inoperable.

The City shall have the right in an emergency to turn the water off or on without notice, but it shall be the duty of the Water Department to make a reasonable effort to notify all consumers that the water is to be turned off or on. [Ord. 190 § 10, 1987.]

13.10.110 Unlawful use, injury, etc., of equipment.

It shall be unlawful for any person to open any manhole or to interfere in any manner with any street sewer service connection or any service pipe connected with mains or to tap any sewer service pipe, without paying the established costs therefor after having made written application therefor as provided by this chapter, or in any way to trespass upon the public property of the sewer department without written permission first being obtained from the Director of Public Works. [Ord. 190 § 11, 1987.]

13.10.120 Application for service – Form.

Before any sewer service will be supplied by the City to any person which requires a connection or reconnection to the City-owned mains of any real property, the owner of the property shall make a written application from such service and service connection upon a form provided by the City. Such form shall be substantially as shown in Exhibit A attached to the ordinance codified in this chapter and by reference incorporated herein. [Ord. 190 § 12, 1987.]

13.10.130 Fees for new sewer service connections.

(1) There shall be a new service connection fee of \$950.00 required for each individual dwelling, residence, building, or separate service to any multiple use consumer on any parcel or parcels under the same ownership. This fee is levied in addition to any actual costs by the City to provide the new service and shall be received into the sewer fund for purposes of operational expenditures.

(2) New service connection fees for multi-use motels or hotels that provide nonhousekeeping sleeping rooms with no more than one bathroom facility per unit and no kitchen or other wastewater plumbing shall be required to pay a per unit fee of \$190.00, which is levied in addition to any and all actual costs by the City in physically providing the new services. Further, the quantity of these unit connections to one or more private property side-sewers and the number of City-owned laterals connecting to the collection main shall be at the determination of the Public Works Director, whose decision is final. [Ord. 194 § 1, 1988; Ord. 190 §§ 13, 13.A, 1987.]

13.10.140 Charges for installing sewer services.

There shall be a charge set apart from any other charge or fee for actual costs to the City for the installation of any sewer mains or system laterals to any private property or other consumer, provided further that such a charge shall be a minimum of \$200.00 or actual costs, whichever is higher. Sizes, locations and connection methods shall be at the sole discretion of the Public Works Director. [Ord. 190 § 14, 1987.]

13.10.150 Installations and connections outside City limits.

Notwithstanding any other sections, the connection fees and installation charges for outside the City limits shall be 150 percent of those same fees and charges for inside the City limits. [Ord. 190 § 15, 1987.]

13.10.160 Reconnection fees.

There shall be herewith established a reconnection fee for use when abandoned services are requested to be reactivated, or when a service has been disconnected because of failure to pay City utility bills, and are delinquent or for other reasons such as vandalism of City-owned property, system piping, etc. (refer to RDMC 13.10.250). The reconnection fee shall be \$200.00 plus the actual costs involved in the reconnection as will be billed by the Director of Public Works (refer to definition of "cost" in RDMC [13.10.010](#) and provisions of RDMC 13.10.250). [Ord. 190 § 16, 1987.]

13.10.170 Prerequisites to multiple service connections.

No sewer shall be served to two or more parcels of property separately owned through a common service pipe. When more than one occupancy is placed on the same parcel of property and each is conducting a separately established residence or business, a separate sewer line shall be required and installed for each occupancy.

Where there is a pre-existing multiple use sewer service, the City shall establish additional accounts and charges for each additional commercial, professional, dwelling, or living unit situated upon the premises not served by an individual sewer. [Ord. 190 § 17, 1987.]

13.10.180 Use of sewer by contractors and other persons engaged in construction work.

Contractors or any person desiring to use the sewer system in construction work where disposal must be made other than through a permanent sewer in each and every case must make written application for and obtain a written permit for the same from the Sewer Department before connecting with any main, and shall make the deposit required by the Sewer Department. Such permit shall be exhibited upon the work for which it has been issued during the full time the sewer is being used pursuant to such permit. [Ord. 190 § 18, 1987.]

13.10.190 Supplying to other than occupant of premises.

It shall be unlawful for any person to provide sewer service to any other person other than the occupants of the premises of such consumer as provided through an approved collection system. [Ord. 190 § 19, 1987.]

13.10.200 Consumers to accept service conditions.

All applicants for service connections or sewer service shall be required to accept such conditions of service as are provided by the system at the location of the proposed service connection and to hold the department harmless from all damages arising from conditions or interruptions of service not expressly caused by the sewer system. [Ord. 190 § 20, 1987.]

13.10.210 Sewer system required.

It shall be unlawful to maintain or use any residence, place of business or other building or place where persons reside, congregate, or are employed which is not provided with means for the disposal of sewage, either by flush toilet connected with a sewage system approved by the City of

Rio Dell City Engineer or, when it is judged permissible by the County Health Officer, a septic tank which meets the requirements of construction and maintenance as required by the said County Health Department.

It shall be unlawful for any person to construct or maintain any privy, cesspool, septic tank, sewage treatment works, sewer pipes or conduits, or other pipes or conduits for the treatment or discharge of sewage or impure waters or any matter or substance offensive, injurious or dangerous to health whereby they shall do any of the following:

(1) Overflow any lands whatever;

(2) Empty, flow, seep, drain into or affect any springs, streams, rivers, lakes or other waters within the City of Rio Dell; provided, however, with respect to existing septic tanks, sewage treatment works, sewer pipes or conduits or other pipes or conduits for the treatment or discharge of sewage or impure waters, if it would be impossible to comply with the provisions of this section, the County Health Officer shall have the power by special permit to allow such variations from the provisions contained in this section as will prevent unnecessary hardship or injustice and at the same time most nearly accomplish the general purpose and intent hereof.

It shall be unlawful for any person, firm or corporation to construct, build, or rebuild any place of residence or other building or place where persons congregate, reside or are employed which is not to be connected to an approved public sanitary sewer without first submitting plans of the means of sewage disposal to the City Engineer and obtaining a permit therefor as herein provided. Such plans shall include the plot plan of the premises with sufficient elevations, the size and type of septic tank, and a plan of the absorption field, giving all dimensions and other pertinent information. No sewage disposal installation shall be made without inspection. A copy of each inspection report shall be filed with the Health Officer. [Ord. 190 § 21, 1987.]

13.10.220 Building sewers, laterals and connections.

(1) Permit Required. No person shall construct a building sewer, lateral sewer or make a connection with any public sewer without first obtaining a written permit from the City and paying all fees and connection charges as required.

(2) Design and Construction Requirements. Design and construction of building sewers and lateral sewers shall be in accordance with the requirements of the City and to the approval of the City Engineer.

(3) Separate Sewers. No two adjacent buildings fronting on the same street shall be permitted to join the use of the same side sewer. Every building or industrial facility must be separately connected with a public sewer if such public sewer exists in the street upon which the property abuts or in an easement which will serve said property. However, two or more buildings located on property belonging to the same owner may be served with the same side sewer provided the property cannot be subdivided into smaller legal-sized lots.

(4) Old Building Sewers. Old building sewers may be used in connection with new buildings only when they are found, upon examination and test by the Director of Public Works, to meet all requirements of the City.

(5) Cleanouts. Cleanouts in building sewers shall be provided in accordance with the rules, regulations and ordinances of the City. All cleanouts shall be maintained watertight.

(6) Down Spouts/Roof Drains. Down spouts or roof drains shall not discharge rainwater or storm runoff into the building lateral or any sewer connection.

(7) Sewer Too Low. In all buildings hereafter constructed in which any building sewer is too low to permit gravity flow to the public sewer, sanitary sewage carried by such building sewer shall be lifted by artificial means, approved by the Director of Public Works, and discharged to the public sewer at the expense of the owner.

(8) Connection to Public Sewer. The connection of the building sewer into the sewer system shall be made at the applicant's expense. The applicant shall extend the building sewer to the property line, at which point it shall be the responsibility of the City to connect the building sewer to the City system lateral. Any damage to the lateral sewer shall be repaired at the cost of the applicant to the satisfaction of the Director of Public Works.

(9) Maintenance of Building Sewer. Building sewers shall be free of infiltration and be maintained by the owner of the property served thereby.

(10) Public Sewer Construction – Permit Required. No person shall construct, extend or connect to any public sewer without first obtaining a written permit from the City and paying all fees and connection charges and furnishing bonds as required. The provision of this section requiring permits shall not be construed to apply to contractors' construction sewers and appurtenances under contracts awarded and entered into by the City.

(11) Plans, Profiles and Specifications Required. The application for a permit for public sewer construction shall be accompanied by three complete sets of plans, profiles and specifications, complying with all applicable ordinances, rules and regulations of the City prepared by a registered civil engineer showing all details of the proposed work based on an accurate survey of the ground. The application, together with the plans, profiles and specifications, shall be examined by the City Engineer, who shall within 20 days approve them as filed or require them to be modified as he deems necessary for proper installation. When the City Engineer is satisfied that the proposed work is proper and the plans, profiles, and specifications are sufficient and correct, he shall order the issuance of a permit predicated upon the payment of all connection charges, fees and furnishing bonds as required by the City. The permit shall prescribe such terms and conditions as the City Engineer finds necessary in the public interest.

(12) Subdivisions. The requirements of this section shall be fully complied with before any final subdivision map shall be approved by the City Council. The final subdivision map shall provide for the dedication for public use of streets, easements or rights-of-way in which public sewer lines are to be constructed. If a final subdivision map of a tract is recorded and the work of constructing sewers to serve the tract is not completed within the time limit allowed in the permit, the City Council may extend the time limit or may complete the work and take appropriate steps to enforce the provisions of the bond furnished by the subdivider.

(13) Easements or Right-of-Way. In the event that an easement is required for the extension of the public sewer or the making of connections, the applicant shall procure and have accepted by the City a proper easement or grant of right-of-way having a minimum width of 10 feet sufficient in law to allow the laying and maintenance of such extension or connection.

(14) Persons Authorized to Perform Work. Only properly licensed contractors and City forces shall be authorized to perform the work of public sewer construction within the City. All terms and conditions of the permit issued by the City to the applicant shall be binding on the contractor.

(15) Compliance with Local Regulations. Any person constructing a sewer within a street shall comply with all State, County or City laws, ordinances, rules and regulations pertaining to the cutting or pavement opening, barricading, lighting, and protecting of trenches, backfilling and repaving thereof and shall obtain all permits and pay all fees required by the department having jurisdiction prior to the issuance of a permit of the City.

(16) Design and Construction Standards. Design and construction of sewers within the City must be approved by the City Engineer. Three complete sets of as-built drawings showing the actual location of all mains, structures, wyes, and laterals shall be filed with the City before final acceptance of the work.

(17) Completion of Sewer Required. Before any acceptance of any sewer line by the City and prior to the admission of any sewage into the system, the sewer line shall be tested and shall be complete to the satisfaction of the City Engineer. [Ord. 190 § 22, 1987.]

Article III. Rates, Charges and Billing

13.10.230 Rates, charges and billings.

(1) Rates, effective as determined with passage of the ordinance codified in this chapter, are composed of two separate elements for use in monthly billing:

(a) A uniform system fee applied to each service regardless of size and whether or not any service is used (a disconnected service shall not be required to pay this fee, but will be subject to a connection and reconnection fee as provided in RDMC [13.10.130](#) through 13.10.170). This fee shall be \$2.50 monthly.

(b) A usage cost at the following rates:

User Classification	Monthly Charge
Residential	\$11.50
Apartments	\$11.50
Barber and Beauty Shops	\$11.50
Retail Establishments	\$11.50
Office Buildings	\$11.50
Halls and Churches	\$11.50
Mobile Homes	\$11.50
Motels	\$16.60/mo., plus \$0.67 per 100 cu. ft. of water over 1,510 cu. ft.
Primary School	\$23.20/mo., plus \$0.39 per 100 cu. ft. of water over 4,290 cu. ft.
Elementary School	\$23.20/mo., plus \$0.53 per 100 cu. ft. of water over 3,150 cu. ft.
Restaurants and Lounges	\$15.40/mo., plus \$1.92 per 100 cu. ft. of water over 600 cu. ft.
Bowling Alley	\$26.50/mo., plus \$0.64 per 100 cu. ft. of water over 3,125 cu. ft.
Grocery Stores	\$14.60/mo., plus \$1.93 per 100 cu. ft. of water over 1,225

	cu. ft.
Service Stations and Garages	\$15.20/mo., plus \$0.71 per 100 cu. ft. of water over 1,225 cu. ft.
Laundries	\$43.50/mo., plus \$0.49 per 100 cu. ft. of water over 1,225 cu. ft.
Bars	\$15.40/mo., plus \$0.64 per 100 cu. ft. of water over 1,390 cu. ft.
Car Washes	\$24.00/mo., plus \$0.32 per 100 cu. ft. of water over 4,000 cu. ft.
Doctor's and Dental Offices, Clinics and Laboratories	\$13.20/mo., plus \$0.44 per 100 cu. ft. of water over 1,140 cu. ft.
Convalescent Homes	\$13.20/mo., plus \$0.59 per 100 cu. ft. of water over 1,140 cu. ft.
Recreational Vehicle Parks	\$14.00/mo. plus \$2.50 per space plus \$0.15 per 10 cu. ft. of water over 10,750 cu. ft.
Industrial/Environmental	\$95.00/mo. plus \$3.50 per 100 cu. ft. of water over 500 cu. ft.

(2) All sewer billing shall be monthly to coincide with water billing, scheduled for posting and delivery on the first day of each month following water meter readings. Utility bills are due and payable from the first day of each month at the Rio Dell City Hall.

Utility bills not having been paid before the next following billing shall be considered to be delinquent and no further notice will be provided other than on the said next following billing reflecting that two months of service are outstanding.

Should water payment in full not be received within 10 calendar days from the said second billing, then shut-off notices shall be issued and the water service discontinued until payment of all outstanding billings is made in full (refer to RDMC 13.10.250); provided further, that no such shut-off will occur on a Friday unless specifically directed by the Director of Public Works.

(3) Sewer service billing shall be assessed against the person or persons who reside in or otherwise occupy the premises being served and identified as the person or persons having completed an application for sanitary sewer service as a non-owner resident of the premises, and after having deposited \$30.00 as surety against any sewer service charges sustained during the said non-owner occupancy or control of the said premises, whereupon the depositor shall receive a numbered receipt which shall be required to be presented at demand of all or any part of a refund of any balance of deposit remaining after any and all current sanitary sewer service charges are satisfied.

However, and notwithstanding the above, owners of real property rented, leased, occupied or in any manner controlled by non-owners shall be liable for any unpaid sewer service not paid by the said non-owners, with such unpaid amounts due and payable prior to any continued use of any said premises, and the water to such premises shall therefor also be discontinued in order to cause the sewer service to become inoperable pending settlement of outstanding utility bills.

(4) In any case served by the Rio Dell sewer system, either inside or outside of the City limits, shall pay the following monthly rates as a minimum:

(a) Inside City limits, the same as subsection (1) of this section.

(b) Outside City limits, 150 percent of the total minimum rate in effect in subsection (1) of this section.

(5) All sewer billing is due and payable at the Rio Dell City Hall and payments not made before the next following billing shall be deemed to be delinquent and 10 calendar days thereafter, without benefit of further notice, delinquent services will be discontinued (refer to subsection (2) of this section).

(6) Any consumer required to pay for sewer services in accordance with this section who commences service on or after the sixteenth of any month shall pay a rate for that month of only 50 percent of the required rate for the full month.

Any consumer required to pay for sewer service in accordance with this section who discontinues service on or before the fifteenth day of any month shall pay a rate for that month of only 50 percent of the required rate for the full month. [Ord. 248 § 1, 2003; Ord. 231 § 1, 1995; Ord. 210 §§ 1, 2, 1991; Ord. 207, 1991; Ord. 190 § 23, 1987.]

13.10.240 Discontinuance of service for nonpayment.

In the event that any customer shall be delinquent in the payment of his sewer bill, the department shall have the right forthwith and without further notice to discontinue water service to the premises of such delinquent customer and water shall not again be supplied to him or to the premises until all delinquent City utility bills and charges for reconnection have been paid. [Ord. 190 § 24, 1987.]

13.10.250 Procedure for restoring service after delinquency.

If water service is cut off or discontinued for failure to pay delinquent City utility bills, such service may again be established only in the event the customer or the owner of the premises served pays all delinquent bills and charges as may be required by this chapter.

When an owner or customer has been delinquent in his sewer bills twice in succession or three times in any one 12-month period, he shall be required to pay a late payment fee of \$10.00. Said late payment fee shall be increased by \$10.00 for each succeeding late payment, up to a maximum fee of \$200.00. Thereupon and not otherwise will water service again be made or established to the premises where the bill has been delinquent (thus allowing sewer service). [Ord. 190 § 25, 1987.]

Article IV. Services

13.10.260 To remain City property – Repairs by City.

All sewer pipes in public property are the property of the City and the City will maintain and repair them when in its judgment such repairs are needed. [Ord. 190 § 26, 1987.]

13.10.270 One service to lot or parcel of land – Exception.

There shall be at least one sewer service on each lot or parcel of real property which is improved with a dwelling or building thereon; except where one building occupies more than one lot, then only one service for such building shall be required. [Ord. 190 § 27, 1987.]

13.10.280 Connection service pipe to system – Premises to be left as originally found upon completion of tests – Notice to City – Liability of plumber and customer.

Any plumber or any other person connecting private sewer service pipe to the property side of a City sewer must leave the City system in as good condition as found, and shall notify the City at

the time the connection is made. Any damage caused by the negligence or carelessness of any plumber or other person to any part of the connection must be paid by such plumber or person to the City on demand. [Ord. 190 § 28, 1987.]

13.10.290 Bill to be rendered after connection.

The sewer department of the City may connect to any City sewer service pipe at any time it shall deem it expedient to do so, and render a corrected bill from the date of installation of such connection. [Ord. 190 § 29, 1987.]

13.10.300 Liability of customer for damages to system.

After the sewer service is so connected, any damage resulting from malice, carelessness or negligence of the customer or any member of his family, or anyone employed by him, and any damage which may result from hot water or steam from a boiler, or otherwise, shall be paid for by such customer to the City on presentation of a bill therefor; and in case such bill is not paid, the water shall be shut off to the premises without further notice, and the same shall not be turned on until all charges are paid. [Ord. 190 § 30, 1987.]

13.10.310 Cutting off or interfering with sewer service.

It shall be unlawful for any person to interfere with or cut off or remove a sewer service from where it has been installed without first receiving written permission from the Director of Public Works. Such permission shall be granted only for the purpose of tests, replacements, repairs or service pipes, readjustment of service or similar emergency. [Ord. 190 § 31, 1987.]

13.10.320 Application for stopping sewer service bill to be rendered.

Upon the written notice of the owner of a building or premises to have the sewer service stopped, the City shall have the water shut off, and at the time record the reading of the meter and render a bill in a sum which shall be the amount according to the rates and charges provided for herein. [Ord. 190 § 32, 1987.]

13.10.330 Nuisance abatement.

Any nuisance, contamination, pollution, or infiltration as defined herein existing on any parcel of land in the City of Rio Dell may be abated as provided herein. The procedure for said abatement provided herein shall not be exclusive, but shall be cumulative and in addition to any other abatement procedure provided by the laws of the State of California or the ordinances of the City of Rio Dell. [Ord. 190 § 33, 1987.]

13.10.340 Sewage not to be discharged so as to result in contamination, pollution or nuisance.

No person shall discharge sewage or other waste, or the effluent of treated sewage or other waste, in any manner which will result in contamination, pollution or a nuisance. [Ord. 190 § 34, 1987.]

13.10.350 Abatement of contamination.

Whenever any local Health Officer or enforcement official finds that a contamination exists, the officer or official shall order the contamination abated, as provided in this chapter. [Ord. 190 § 35, 1987.]

13.10.360 Issuance of peremptory abatement order – Report to regional board – Prosecution of injunction proceedings.

The local Health Officer or enforcement official may issue a peremptory order requiring the abatement of a contamination and shall immediately furnish to the proper regional board a report of information and data relating thereto. Coincident with issuing such order, or if any order or regulation is not complied with, the local Health Officer or enforcement official may bring and prosecute an action for an injunction in the superior court of the County of Humboldt.

The local Health Officer of Humboldt County shall render to persons subject to such order all possible assistance in complying with the order including all possible assistance in securing any necessary funds for such purpose. [Ord. 190 § 36, 1987.]

13.10.370 Discharge of sewage or other waste resulting in contamination a misdemeanor.

Any person who discharges sewage or other waste in any manner which results in contamination is guilty of a misdemeanor. Any person, firm or corporation who violates or refuses or fails to comply with any of the provisions of this chapter shall be guilty of a misdemeanor and shall be punished upon conviction of a fine of not less than \$25.00 nor more than \$500.00 or by imprisonment in the County Jail for not more than six months or by both such fine and imprisonment. [Ord. 190 § 37, 1987.]

13.10.380 Abatement procedures.

The procedure for abatement of a contamination, pollution, nuisance, or infiltration including but not limited to notice of such abatement, recordation of lis pendens, time and place of hearing, order of the Council, accounting of costs and receipts, hearing on account and proposed assessment, recordation of lien, and collection with ordinary taxes, shall follow essentially the same procedure as provided for in Chapter [8.10](#) RDMC, providing for the establishment of a procedure for the abatement of nuisances and making the cost of such abatement a special assessment upon a parcel of land so involved. [Ord. 190 § 40, 1987.]

13.10.390 Liability.

This chapter shall not be construed as imposing upon the City of Rio Dell any liability or responsibility for damage resulting from the defective construction of any sanitary disposal system as herein provided, nor shall the City of Rio Dell or any official or employee thereof or the Humboldt County Health Officer be held as assuming any such liability or responsibility by reason of the inspection authorized thereunder. [Ord. 190 § 42, 1987.]

13.10.400 Prohibited discharges of uncontaminated waters.

It shall be unlawful for any person to discharge or cause to be discharged any surface water, rain water, stormwater, ground water, street drainage, subsurface drainage, yard drainage, roof drainage, water from yard fountains, ponds or lawn sprays, cooling water, or any other uncontaminated water into any sewage facility which directly or indirectly discharges to a sanitary sewer system owned by the City of Rio Dell. [Ord. 203, 1990; Ord. 190 § 46, 1987; Ord. 38 § 1, 1965.]

13.10.410 Prohibited discharges of enumerated wastes.

It shall be unlawful for any person to discharge or cause to be discharged into the City of Rio Dell sanitary sewer system, or any sewer system which directly or indirectly connects into the City of Rio Dell sanitary sewer system, any of the following wastes:

(1) Gasoline, benzene, naphtha, solvent, fuel oil or any liquid, solid or gas that would cause or tend to cause flammable or explosive conditions to result in the sewerage system;

(2) Waste containing toxic or poisonous solids, liquids or gases in such quantities that, alone or in combination with other waste substances, may create a hazard for humans, animals or the local environment, interfere detrimentally with wastewater treatment processes, cause a public nuisance, or cause any hazardous condition to occur in the sewerage system;

(3) Waste having a hydrogen ion index (pH) lower than 5.5 (acidic) or higher than 8.5 (alkaline) or having any corrosive or detrimental characteristic that may cause injury to wastewater treatment or maintenance personnel or may cause damage to structures, equipment or other physical facilities of the sanitary sewer system;

(4) Solids or viscous substances of such size or in such quantity that they may cause obstruction to flow in the sewer or be detrimental to proper wastewater treatment plant operations. These objectionable substances include but are not limited to asphalt, dead animals, offal, ashes, sand, mud, straw, industrial process shavings, metal, glass, rags, feathers, tar, plastics, wood, whole blood, paunch manure, bones, hair and fleshings, entrails, paper dishes, paper cups, milk containers, or other similar paper products, either whole or ground. [Ord. 203, 1990; Ord. 190 § 47, 1987.]

13.10.420 Discharges – Criteria.

It shall be unlawful for any person to discharge or cause to be discharged into any public sewer system which directly or indirectly connects to the City of Rio Dell sanitary sewer system any sewage if, in the determination of the Director of Public Works, such sewage may have an adverse or harmful effect on sewers, maintenance personnel, wastewater treatment plant personnel or equipment, treatment affluent quality, public or private property, or may otherwise endanger the public, local environment, or create a public nuisance. The Director of Public Works, in determining the acceptability of specific sewage, shall consider the nature of the

sewage and the adequacy and nature of the collection, treatment and disposal system available to accept the sewage. [Ord. 203, 1990; Ord. 190 § 48, 1987.]

13.10.430 Interceptors – Required.

Grease, oil and sand interceptors shall be provided by the owner when in the determination of the Director of Public Works they are necessary for the proper handling of liquid wastes containing grease in excessive amounts, or any flammable wastes, sand and other harmful ingredients; except that such interceptors shall not be required for buildings used for residential purposes. All interceptors shall be of a type and capacity approved by the Director of Public Works and shall be so located as to be readily and easily accessible for cleaning and inspection. [Ord. 203, 1990; Ord. 190 § 49, 1987.]

13.10.440 Interceptors – Maintenance.

All grease, oil and sand interceptors shall be maintained by the owner, at his expense, in continuously efficient operation at all times. [Ord. 203, 1990; Ord. 190 § 50, 1987.]

13.10.450 Inspections and sampling.

The City Manager or any person designated by the City Manager may inspect the facilities of any user of the City of Rio Dell sanitary sewer system, or any facilities in any way or manner connected to the City of Rio Dell sanitary sewer system, to ascertain whether the purpose of this chapter is being met and all requirements are being complied with. Persons or occupants of the premises where sewage or wastewater is created or discharged shall allow the City Manager or his designee ready access at all reasonable times and at all parts of the premises for the purposes of inspections or sampling, or in the performance of any of their duties. The City of Rio Dell shall have the right to set up on user's property such devices as are necessary to conduct sampling and metering operations. The refusal of reasonable access to the user's premises for inspection purposes or monitoring purposes of sanitary sewer system-related matters shall be grounds for immediate suspension of the Rio Dell sanitary sewer system service to the person refusing reasonable access to the user's premises, including immediate severance of the sewer connection as set forth in RDMC [13.10.490](#). [Ord. 203, 1990; Ord. 190 § 51, 1987.]

13.10.460 Issuance of cease and desist orders.

When the City finds that a discharge of sewage or wastewater has taken place in violation of prohibitions or limitations of this chapter, the City Manager may issue an order to cease and desist and direct those persons not complying with such prohibitions, limits, requirements or provisions to:

(1) Comply forthwith;

(2) Comply in accordance with the time schedule set forth by the City; or

(3) Take appropriate remedial or preventive action in the threatened violation. [Ord. 203, 1990; Ord. 190 § 52, 1987.]

13.10.470 Submission of time schedules.

When the City finds that a discharge of sewage or wastewater has been taking place in violation of the prohibitions and limitations prescribed in this chapter, the City Manager may require the user to submit for approval, with such modifications as the City Manager deems necessary, a detailed time schedule of specific actions which the user shall take in order to prevent or correct a violation of such requirements. [Ord. 203, 1990; Ord. 190 § 53, 1987.]

13.10.480 Termination of service.

In order to effect the powers of the City of Rio Dell regarding this chapter, the City Manager or any City employees designated by the City Manager may enter upon private property for the purpose of inspection and maintenance of sewage disposal facilities and may terminate sewer and water service to property in which a violation of this chapter is found to exist. In addition, the City Manager may terminate sewer and water service to any person who intentionally or negligently violates any provision of this chapter.

Prior to termination of sewer and water service, however, the City Manager shall notify in writing the owner and tenant, if any, of such property that service is intended to be so terminated and conduct a hearing thereon as herein provided. Such notice shall be mailed to the owner at the address shown on the records of the Assessor of the County by deposit of the notice in first class mail, postage prepaid, or is known to the Clerk and a copy shall be delivered to the owner or tenant or posted conspicuously on the property. The notice shall state the date of the proposed termination of service and the reasons therefor, and the date the City Manager shall hold a hearing upon such intended termination. Such hearing shall not be held less than 10 days subsequent to the giving of notice as herein required. Giving of notice is effective on deposit of the notice in first class mail, postage prepaid. [Ord. 203, 1990; Ord. 190 § 54, 1987.]

13.10.490 Immediate suspension of service.

The City Manager may immediately suspend the sewer and water service when such suspension is necessary, in the opinion of the City Manager, to stop an actual or threatened discharge of wastewater, sewage or any substance into the sanitary sewer system which presents or may present an imminent or substantial endangerment to the health or welfare of persons, to the environment, or causes interference or damage to the treatment works or sanitary sewer system.

Any person notified of the suspension of the sewer and water service shall immediately stop or eliminate the contribution. In the event of the failure of the person to comply voluntarily with the suspension order, the City Manager shall take steps as deemed necessary, including immediate severance of the sewer connection, to prevent or minimize damage or endangerment to any individuals or to the sanitary sewage system. The City Manager shall reinstate the sewer and water service upon proof of the elimination of the noncomplying discharge. [Ord. 203, 1990; Ord. 190 § 55, 1987.]

13.10.500 Appeals.

Any user, permit applicant or permit holder affected by any decision, action or determination, including cease or desist orders made by the City Manager in interpreting or implementing the provisions of this chapter, or any permit issued pursuant to the provisions of this chapter, may file with the City Manager a written request for reconsideration within 10 days of such decision, action or determination, setting forth in detail the facts supporting the user's request for reconsideration.

If the ruling made by the City Manager is unsatisfactory to the person requesting reconsideration, the person may, within 10 days after notification of such City action, file a written appeal to the City Council. The written appeal shall be heard by the City Council within 30 days after the date of filing. The Council shall make a final ruling on the appeal within 10 days after the close of the meeting. The Manager's decision, action or determination shall remain in effect during the period of reconsideration. [Ord. 203, 1990; Ord. 190 § 56, 1987.]

13.10.510 Violation is a misdemeanor.

It shall be unlawful for any person to violate any provision or to fail to comply with any of the requirements of this chapter. Any person violating any of such provisions or failing to comply with any of the mandatory requirements of this chapter shall be guilty of a misdemeanor. Any persons convicted of a misdemeanor under the provisions of this code shall be punishable by fine of not more than \$500.00 or by imprisonment in the County Jail for a period not exceeding six months, or by both such fine and imprisonment. Each person shall be guilty of a separate offense for each and every day during any portion of which any violation of any provision of this chapter is committed, continued or permitted by such person and shall be punishable accordingly. [Ord. 203, 1990; Ord. 190 § 57, 1987; Ord. 38 § 2, 1965.]

13.10.520 Definitions.

For the purpose of this chapter, the terms used are defined as follows:

"Building" means any structure inhabited or used by human beings.

"City of Rio Dell sanitary sewer system" means the sanitary sewer system owned by the City of Rio Dell.

"Permit" means any written authorization required pursuant to this chapter or any other regulation of the City for the installation of the sewage system.

"Public sewer" means a sewer lying within a street or easement and which is controlled by or under the jurisdiction of the City.

"Sewage" means a combination of water-carried wastes from residences, business buildings, institutions, and industrial establishments.

"Sewage facility" means all facilities for collecting, pumping, treating, and disposing of sewage.

“Wastewater” means uncontaminated or contaminated waters discarded or discharged by users and no longer usable for industrial or domestic purposes, including but not limited to water or a combination of water and other substances described in RDMC [13.10.400](#) and [13.10.410](#). [Ord. 203, 1990; Ord. 190 § 58, 1987.]

Chapter 15.05 CONSTRUCTION CODES

Sections:

- [15.05.010](#) Administration.
- [15.05.020](#) Building codes.
- [15.05.030](#) Fees for permits and inspections.
- [15.05.040](#) Person may do own work.
- [15.05.050](#) Penalty.

15.05.010 Administration.

(1) The position of Building Official in and for the City of Rio Dell is hereby created. Said Building Official shall report to the City Manager or his or her representative.

(2) It shall be the duty of the Building Official to administer and enforce the provisions of this chapter and all ordinances of the City and statutes of the State of California relating to the erection, construction, enlargement, alteration, repair, moving, removal, demotion, conversion, occupancy, equipment, use, height, area, location, design, quality of materials, operation, installation, replacement, and maintenance of all buildings and/or structures; heating, ventilation, cooling, refrigeration systems; electrical systems; plumbing and drainage systems; signs; and solar systems in the City of Rio Dell.

(3) Nothing in this chapter shall be construed as prohibiting the City from contracting with qualified persons, firms, or agencies for building plan review and/or inspection services. [Ord. 262 § 15.01.010, 2009.]

15.05.020 Building codes.

(1) The City of Rio Dell hereby incorporates by reference and adopts as its building standards and regulations applicable to all occupancies in the City of Rio Dell each and all of the terms, conditions, regulations, penalties, and provisions of the following codes as from time to time adopted, amended, added, and deleted by regulation of the California State Building Standards Commission:

- (a) California Building Standards Administrative Code;
- (b) California Building Code;
- (c) California Electrical Code;
- (d) California Mechanical Code;
- (e) California Plumbing Code;

- (f) California Energy Code;
- (g) California Elevator Safety Construction Code;
- (h) California Historical Building Code;
- (i) California Fire Code;
- (j) California Green Building Standards Code (CalGreen Code).

(2) The above-mentioned codes, new additions, and amendments thereto shall become effective and operative within the City of Rio Dell 30 days after the date of first publication of the State Building Standards Code by the State Building Standards Commission in the California Code of Regulations, the California Regulatory Notice Register or the California Regulatory Code Supplement.

(3) The above-mentioned codes, new additions, and amendments thereto shall be and hereby are adopted as the Construction Code of the City of Rio Dell for regulating and providing minimum standards for the erection, construction, enlargement, alteration, repair, moving, removal, demolition, conversion, occupancy, equipment, use, height, area, location, design, quality of materials, operation, installation, replacement, and maintenance of all buildings and/or structures; heating, ventilation, cooling, refrigeration systems; electrical systems; plumbing and drainage systems; signs; and solar systems in the City of Rio Dell and providing for the issuance of permits and the collection of fees therefor.

(4) Nothing contained herein shall be construed as prohibiting or limiting the authority of the City of Rio Dell from adopting or establishing more restrictive building standards than provided for in the above-mentioned codes and amendments thereto after making the findings required by Government Code Section 17958.7.

(5) The City shall maintain one current copy of all building standards codes on file. [Ord. 262 § 15.020.020, 2009.]

15.05.030 Fees for permits and inspections.

(1) Any person required to obtain a permit hereunder shall at the time of filing an application therefor pay to the City Clerk a deposit for plan review in the amount as set forth in the California Administrative Code referred to in RDMC [15.05.020](#). Notwithstanding any other provision of these regulations to the contrary, the City shall collect upon the issuance of any permit the actual cost of the plan review services rendered or the plan review fee as set forth in the California Administrative Code, whichever is greater.

(2) Where work is commenced prior to obtaining a permit, a double fee shall be charged.

(3) For the purpose of determining valuation of any work to be performed hereunder, the City may use the Valuation Data Table published by the International Code Council. The above-mentioned table, new editions, and amendments thereto shall become effective and operative within the City of Rio Dell 30 days after the date of first publication. The City may choose to modify the data published as determined by regional conditions, but will not exceed the costs as published. [Ord. 262 § 15.01.030, 2009.]

15.05.040 Person may do own work.

Nothing in this chapter shall be construed as prohibiting any person from doing his own work or employing any person to work on a building or structure to which the provisions of this chapter apply unless otherwise prohibited by law. [Ord. 262 § 15.01.040, 2009.]

15.05.050 Penalty.

Any person, firm, or corporation, whether as principal, agent, employee, or otherwise, violating or causing the violation of any part of this chapter shall be guilty of a misdemeanor and upon conviction thereof shall be punishable by a fine of not more than \$500.00. Such person, firm, or corporation shall be deemed guilty of a separate offense for each and every day during any portion of which any violation of this chapter, or any part hereof, is committed, continued, or permitted by such person, firm, or corporation, and shall be punishable as herein provided. [Ord. 262 § 15.01.050, 2009.]